

find your dream

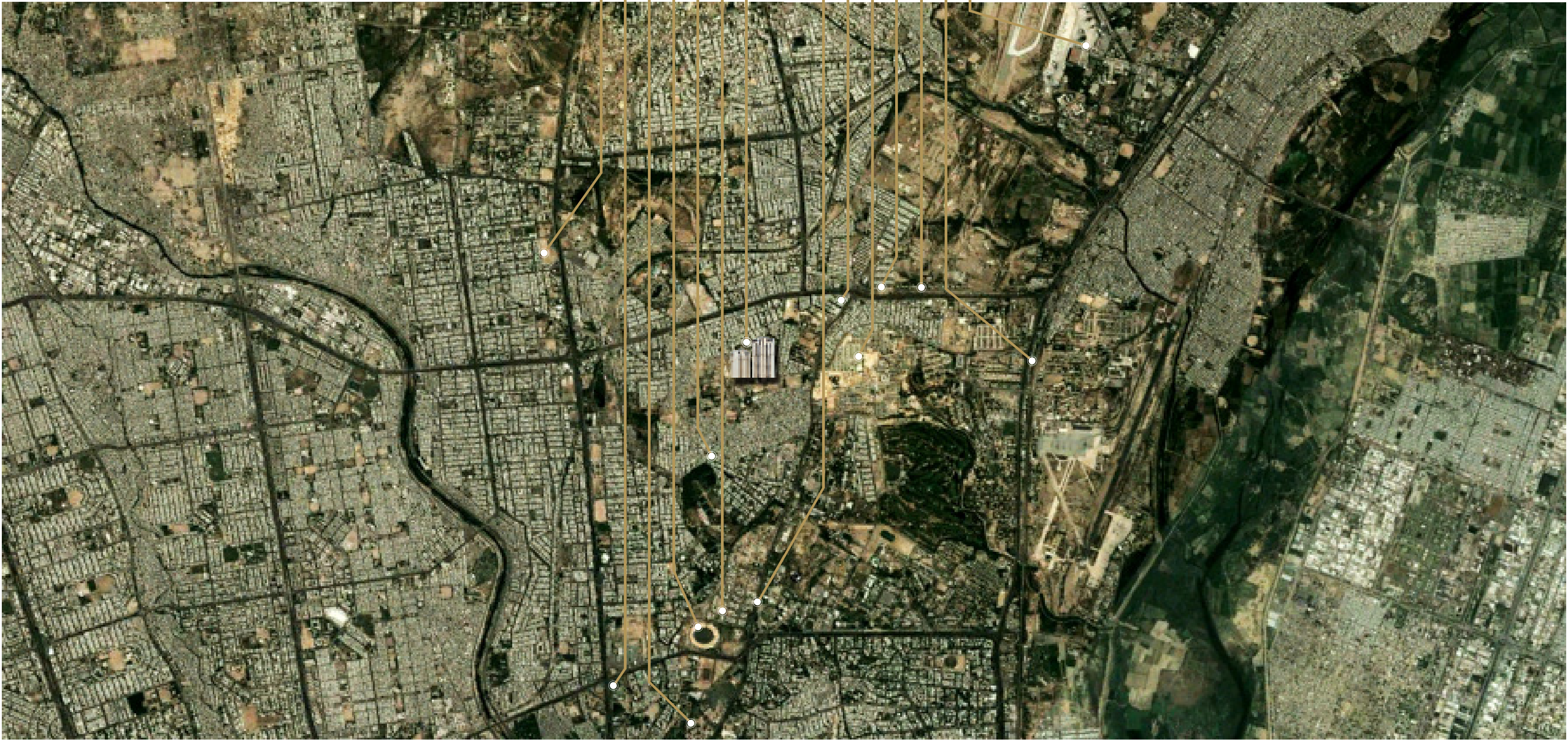


elite lifestyle
lakhani presidency

The Satellite Positioning

Lakhani Presidency-truly the premier experience of luxurious urban living, is conveniently located in between Askari 4 and off National Stadium Road, in safe and secure Cantonment Area.

- LAKHANI PRESIDENCY
- GENERAL HOUSING SOCIETY
- K.D.A OVERSEAS SOCIETY
- NATIONAL STADIUM
- AGA KHAN HOSPITAL
- CIVIC CENTER
- NED UNIVERSITY
- BAHRIA UNIVERSITY
- MILLENIUM MALL
- NAVAL HOUSING SCHEME
- ASKARI IV
- C.O.D
- SHARA-E-FAISAL
- KARACHI AIRPORT



KARACHI : The hub of South East Asia

Karachi has undoubtedly become the commercial and financial hub of South East Asia with a flourishing cosmopolitan and urban ethos. It, because of being a port city, invites a continuous flux of people from all over Pakistan. During the last 3 years, major international franchises have come to Karachi and are doing successful business.

No wonder it offers a wide and varied range of investment opportunities, Specially in the case of real estate sector where there is a demand of more than 8 million houses in Pakistan, leading to skyrocketed prices within a short passage of time. Safe and secure investment is certainly the hallmark of Karachi.

LAKHANI PRESIDENCY

Lakhani presidency is the epitome of luxurious and modish living. This is proven by its grandeur style of residential gated complex, intriguing architectural designs and a complete assurance of modern safety and security to fulfil your reverie of opulence and a high class living.

MASTER PLAN

EXISTING TOWERS



Block A, A1 : 4 Bedrooms
Block B, B1: 3 Bedrooms

- | | | | |
|--------------------------|----------------------------|---------------------------|-----------------------------------|
| 1. Computerized Entrance | 7. Play Area | 13. Sitting Area | 19. Auto Barrier with Card Key |
| 2. Reception Lobby | 8. Gym | 14. Park | 20. Close Circuit T.V |
| 3. Landscaped Pond | 9. Landscaped Pathway | 15. Ramp to Parking | 21. Garbage Space |
| 4. Indoor Games | 10. Access To Parking | 16. Fire Fighting | 22. Sauna |
| 5. Swimming Pool | 11. Fountain | 17. Bar-B.Q. Area | 23. Stand-by Generator |
| 6. Badminton Court | 12. Electrical Sub-Station | 18. Reverse Osmosis Plant | 24. Fire Exit stair (pressurized) |



LOCATION
Between Askari 4 & National Stadium

STATUS
75% Work Done (phase 1)

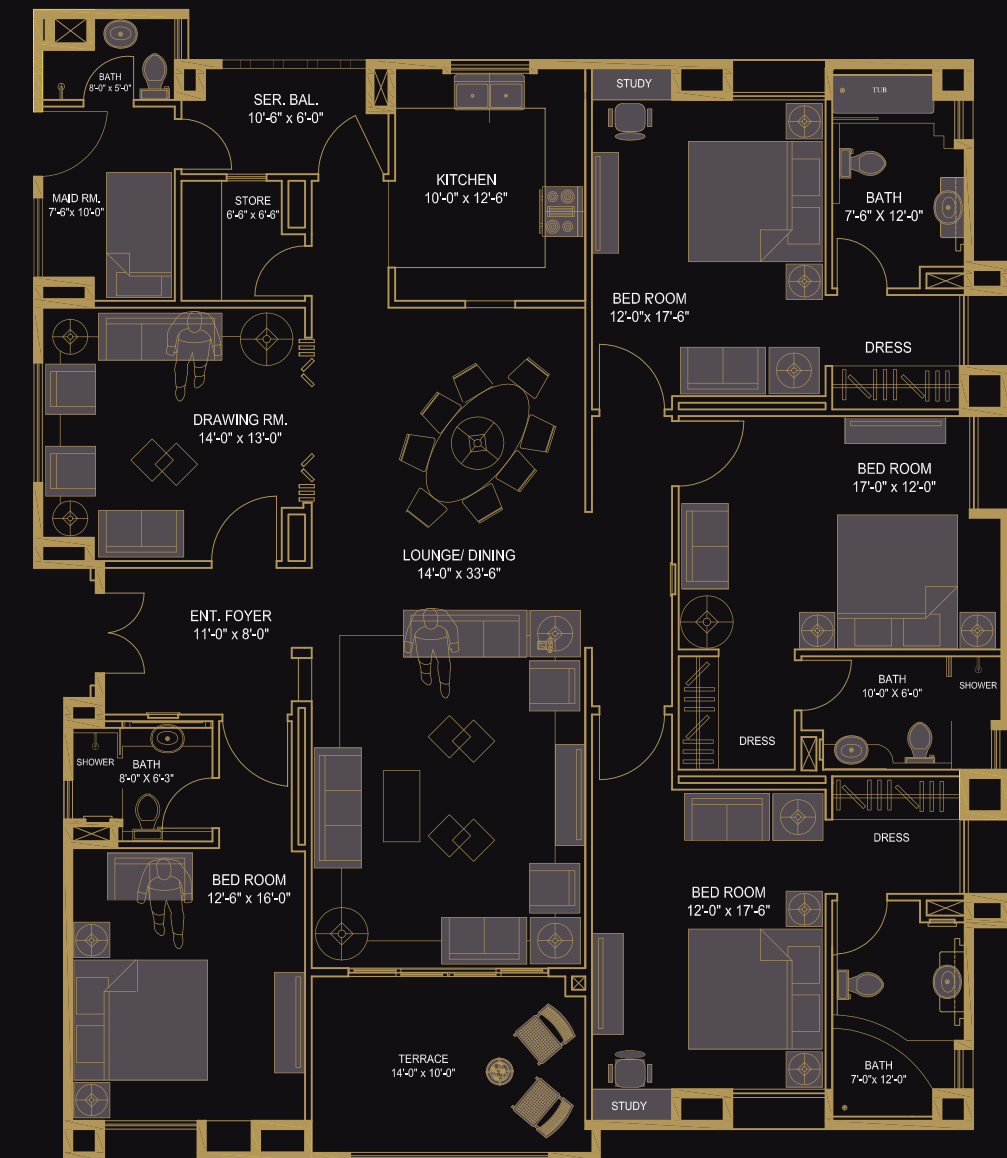
PROJECT
2 Acres land 50% open spaces
Completely Residential
Double gated Community
Computerized Security System
24 Hour Water Supply from R.O Plant
Uninterrupted power supply

OFFER
Possession on 50% Payment
50% Payment in 24 / 240 Months without / with Profit
Caretaking services after possession
Air-conditioned Apartments (limited)

Rationale
Once in a lifetime investment

INNOVA 4 BEDROOMS + MAIDROOM APARTMENT

Floor Area	2889 Sq.ft.
Amenities	200 Sq.ft.
Car Parking-1	386 Sq.ft.
Gross Area	3475 Sq.ft.



Ground to 11th Floor plan

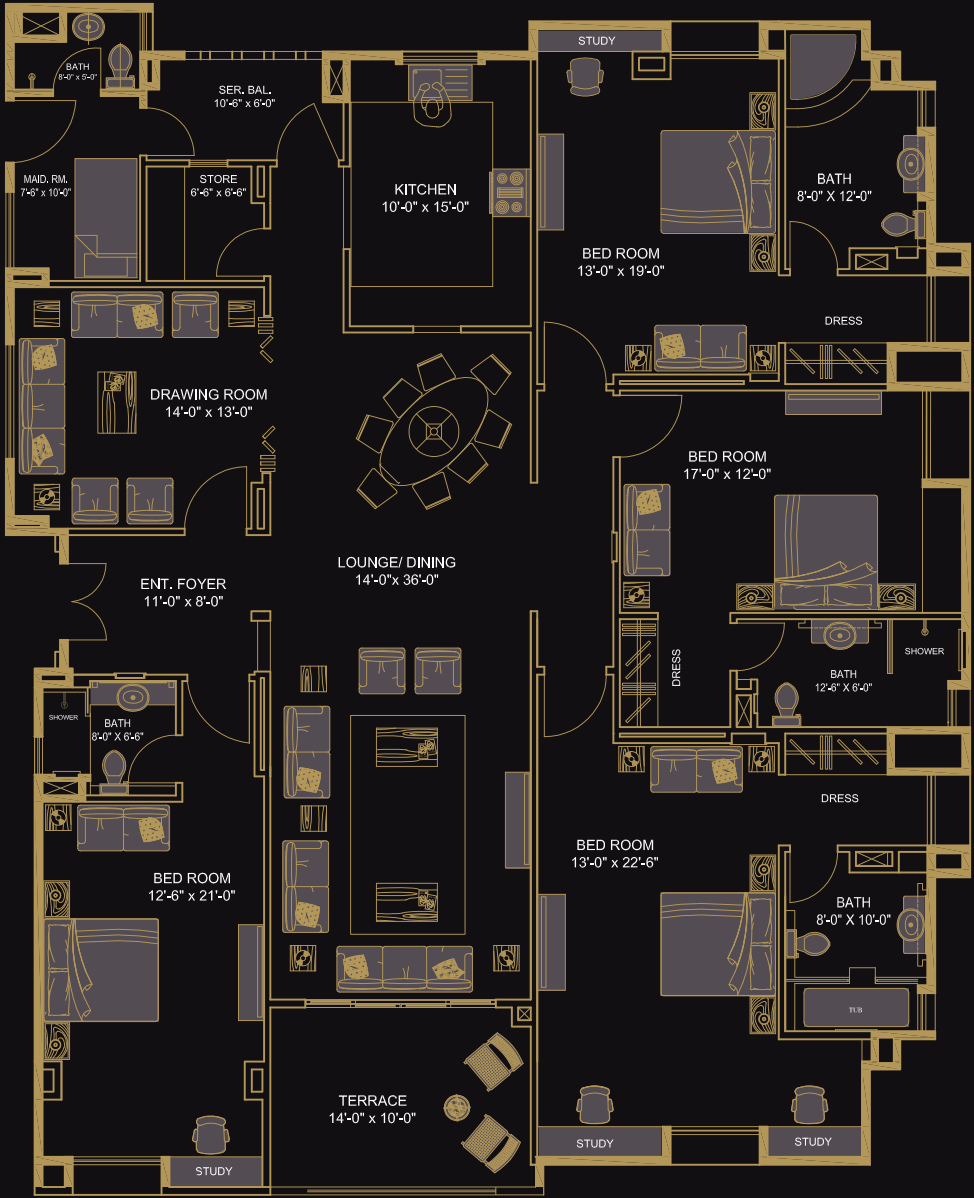
Pic of existing Lift Lobby



Equipped with: Fire Fighting System, Fire Stair (Pressurized) Water Meter RO Plant, C.C.T.V Cameras, Electrical & Communication Ducts.

INNOVA
4 BEDROOMS + MAIDROOM APARTMENT

Floor Area	3230 Sq.ft.
Amenities	200 Sq.ft.
Car Parking-1	386 Sq.ft.
Gross Area	3816 Sq.ft.



12th to 17th Floor plan

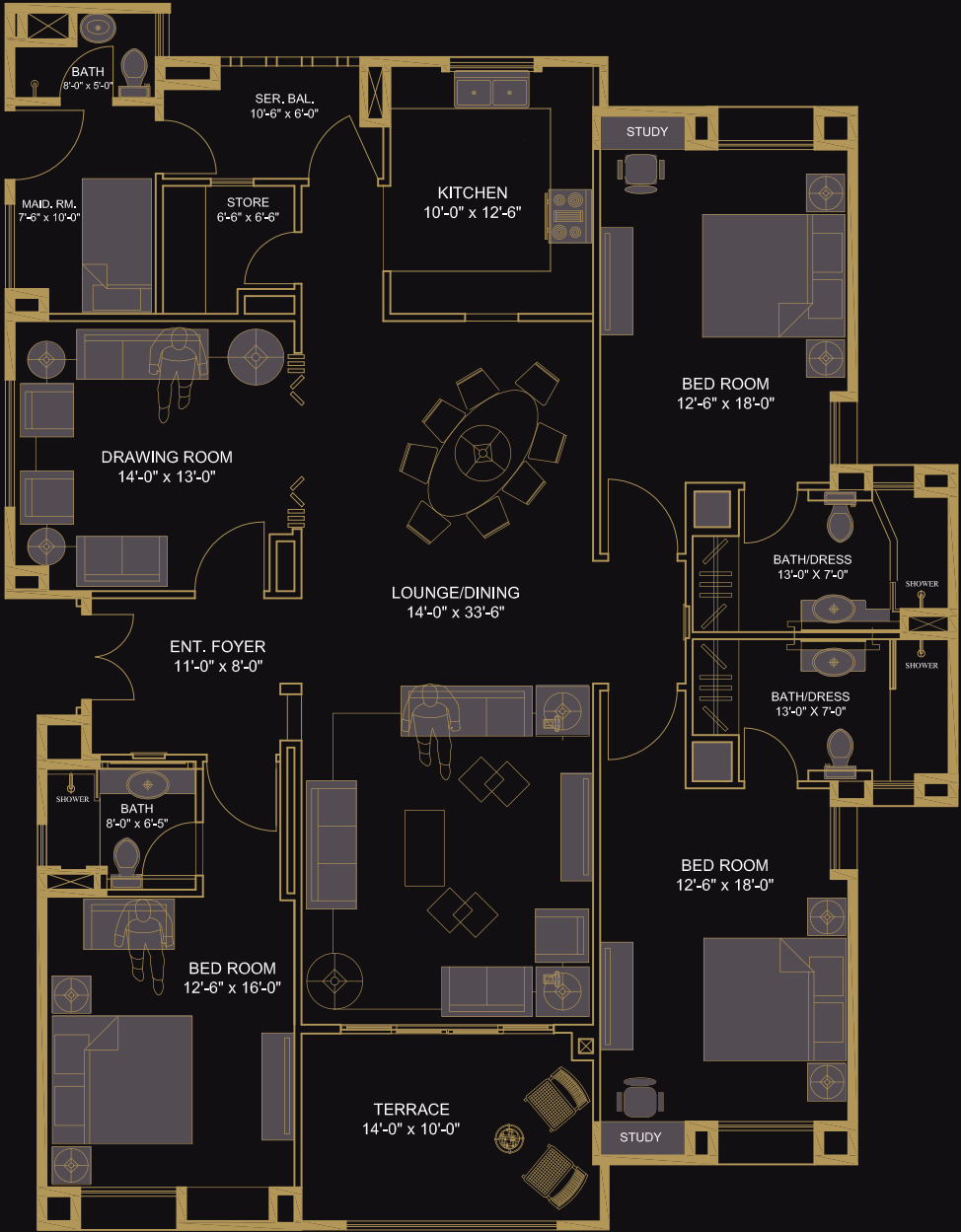
Pic of existing apt (Foyer)



Size 8'-0" x 11"-0"

PERSONA
3 BEDROOMS + MAIDROOM APARTMENT

Floor Area	2437 Sq.ft.
Amenities	200 Sq.ft.
Car Parking-1	386 Sq.ft.
Gross Area	3023 Sq.ft.



Ground to 11th Floor plan

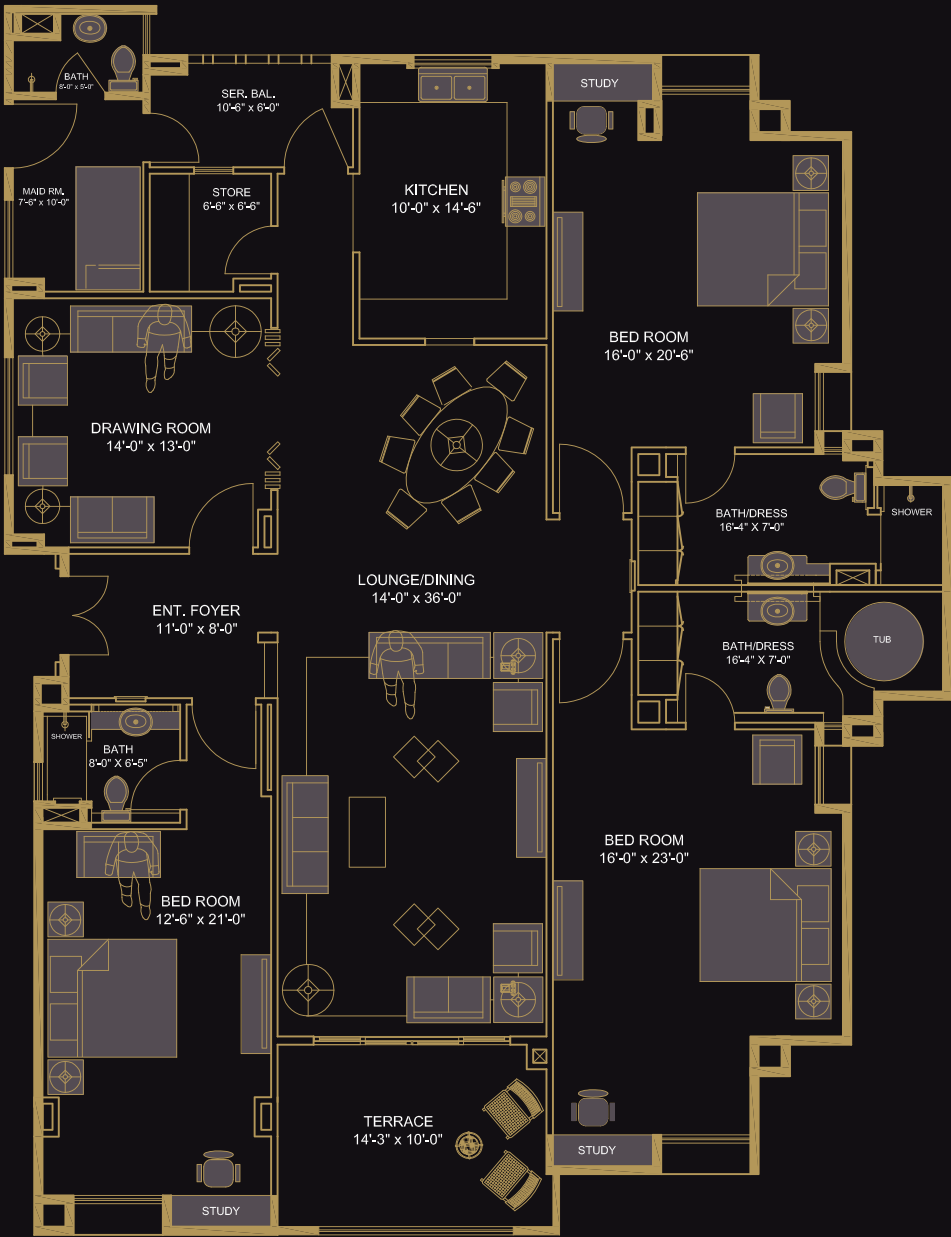
Pic of existing apt (Terrace)



Size 10'-0" x 14'-0"

PERSONA
3 BEDROOMS + MAIDROOM APARTMENT

Floor Area	2820 Sq.ft.
Amenities	200 Sq.ft.
Car Parking-1	386 Sq.ft.
Gross Area	3406 Sq.ft.



12th to 17th Floor plan

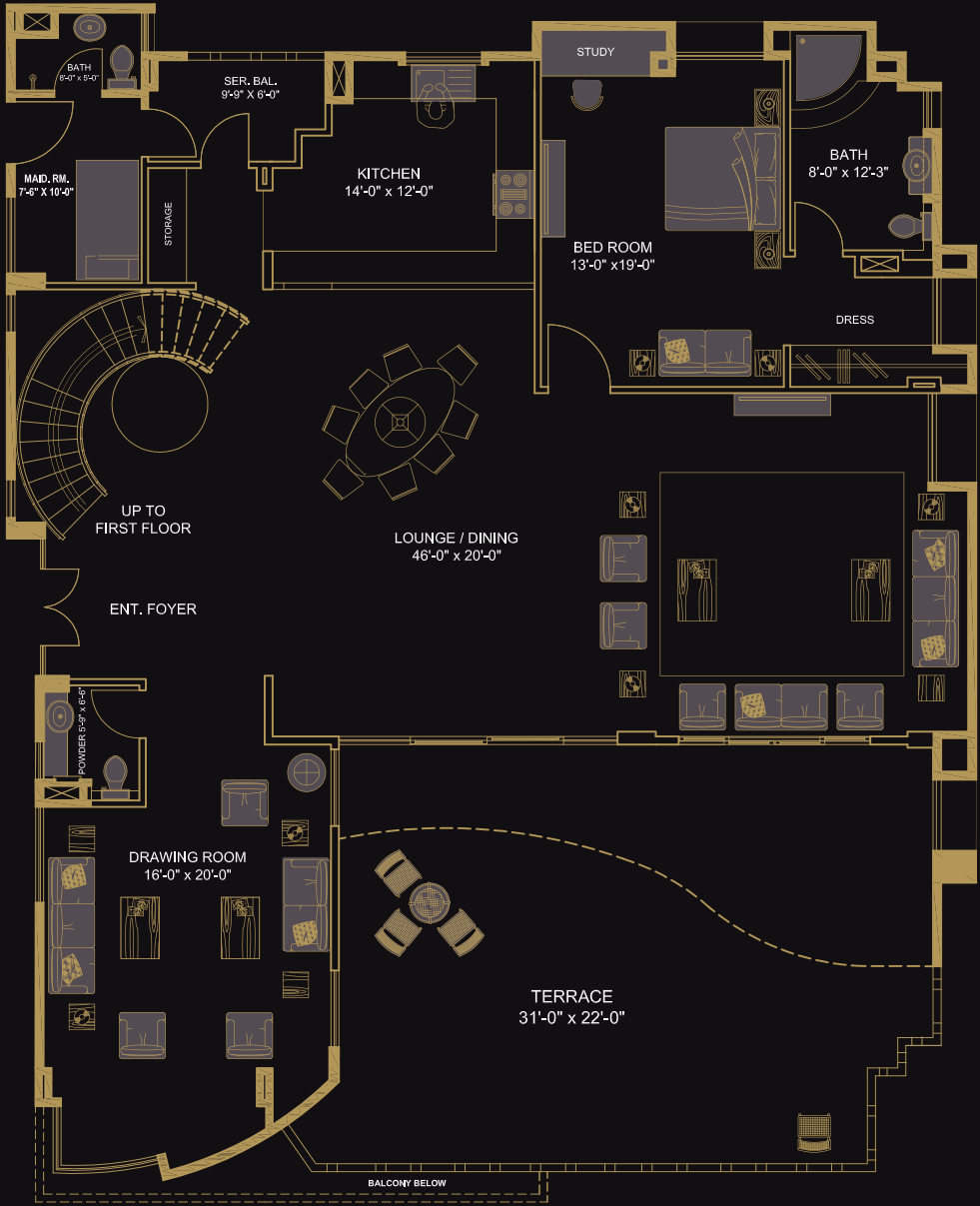
Pic of existing apt (Bathroom)



Size 7'-0" x 12'-0"

LEONARDO
TRIPLEX 5 BEDROOMS + MAIDROOM PENTHOUSE

Floor Area Level -1	2988 Sq.ft.
Floor Area Level -2	2635 Sq.ft.
Roof Top Floor Area Level -3	2590 Sq.ft.
Amenities	200 Sq.ft.
Car Parking -2	771 Sq.ft.
Gross Area	9184 Sq.ft.



18th Floor

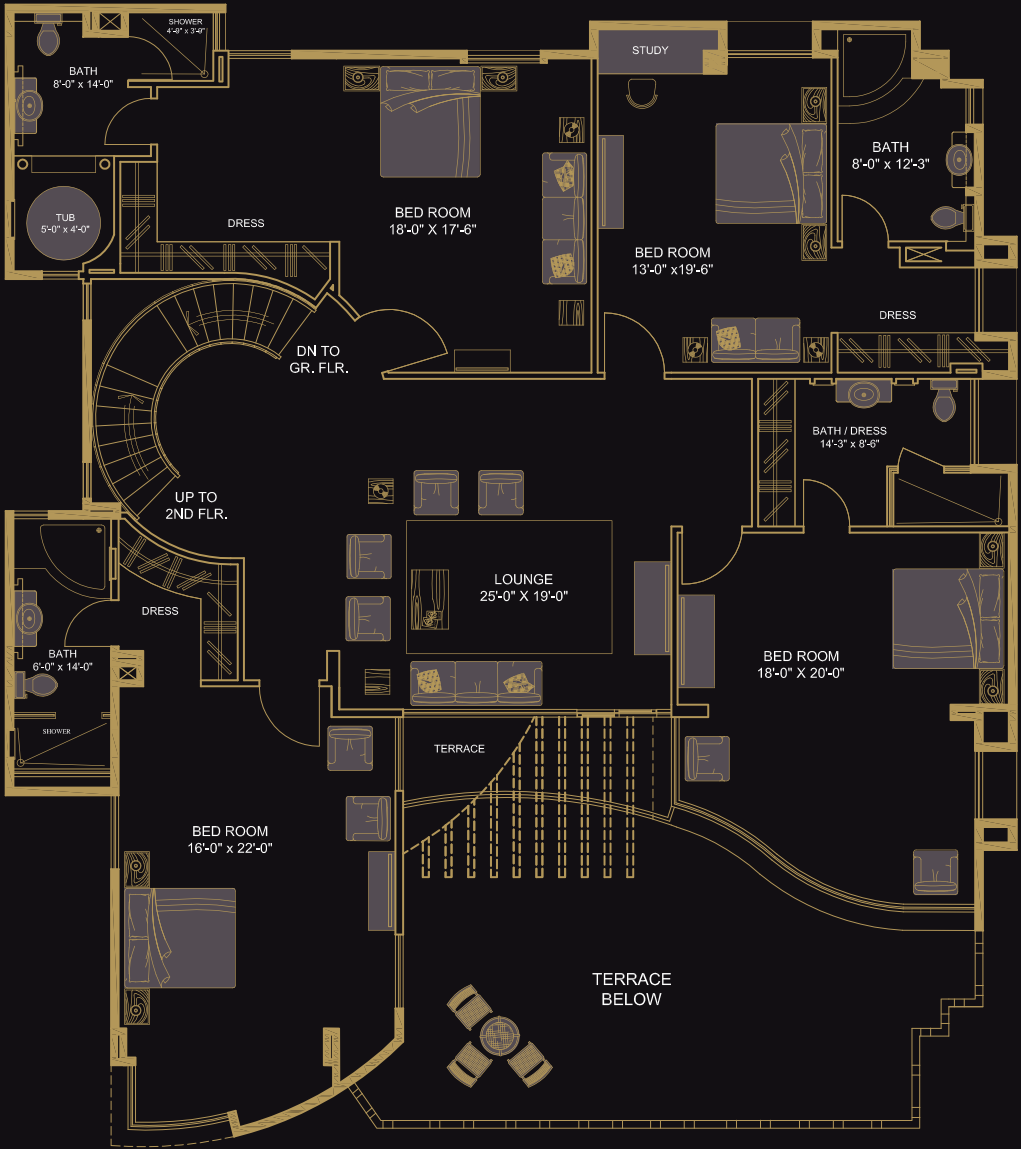
Pic of existing apt (Bathroom)



Size 6'-0" x 12'-6"

LEONARDO
TRIPLEX 5 BEDROOMS + MAIDROOM PENTHOUSE

Floor Area Level -1	2988 Sq.ft.
Floor Area Level -2	2635 Sq.ft.
Roof Top Floor Area Level -3	2590 Sq.ft.
Amenities	200 Sq.ft.
Car Parking -2	771 Sq.ft.
Gross Area	9184 Sq.ft.



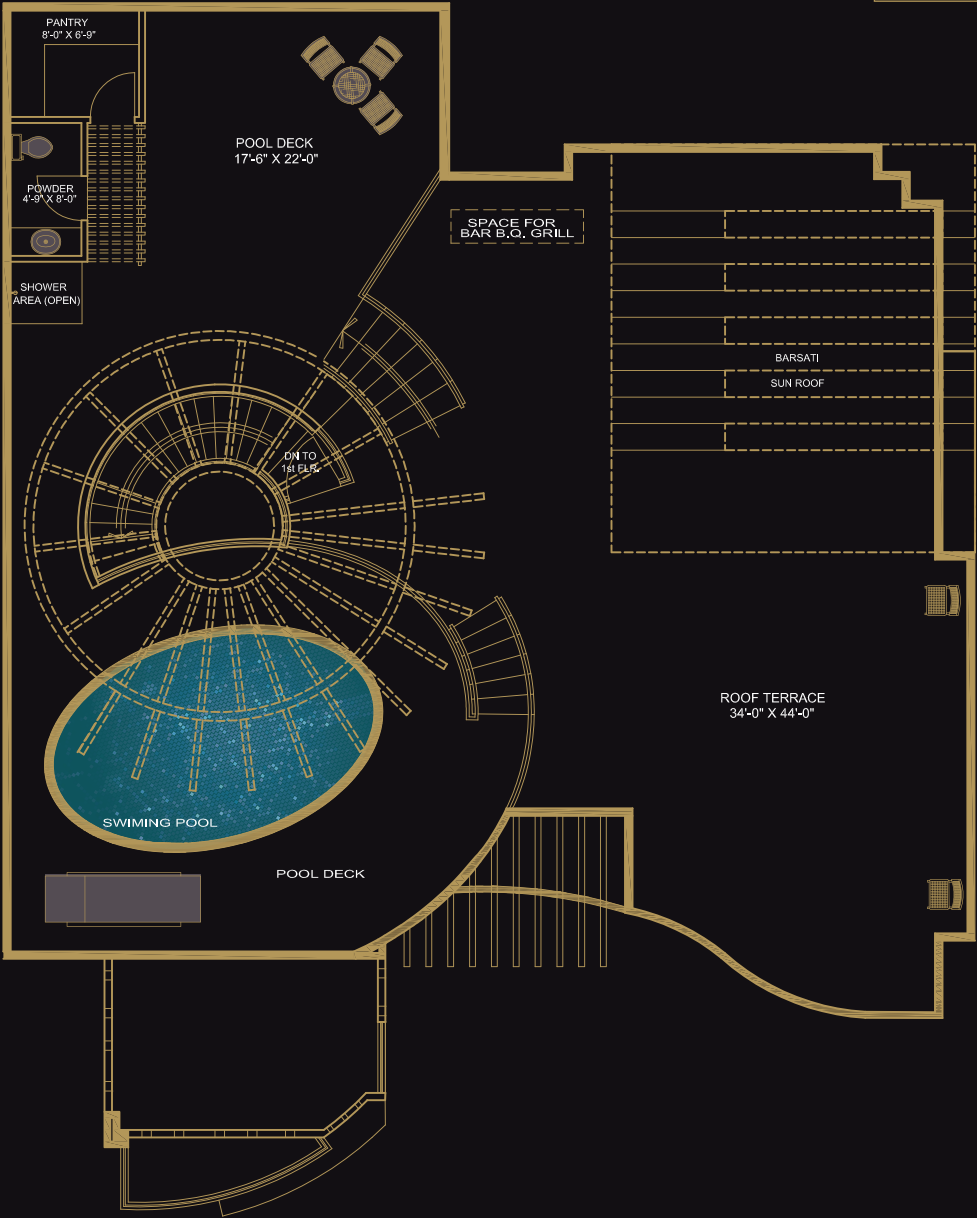
19th Floor

Pic of existing apt (Kitchen)



Size 10'-0" x 12'-0"

LEONARDO
TRIPLEX 5 BEDROOMS + MAIDROOM PENTHOUSE



Floor Area Level -1	2988 Sq.ft.
Floor Area Level -2	2635 Sq.ft.
Roof Top Floor Area Level -3	2590 Sq.ft.
Amenities	200 Sq.ft.
Car Parking -2	771 Sq.ft.
Gross Area	9184 Sq.ft.

20th Floor

The project arrays four gorgeous towers with 5 star features and services offering luxurious units of 3 and 4 bedrooms apt inclusive of a maid room, in addition to a penthouse (triplex) with a sensational pool on roof top. Our project promises you a healthy environment by providing a vast open space to ensure sunlight and fresh air, because nature is the key source of our inspiration.

- Double gated community.
- 24 hours electricity and water supply.
- 24 hours security through electronics surveillance.
- State-of-the-art club house: Swimming pool, sauna and gym.
- Double basement car parking.
- Branded passenger and cargo lifts.
- Fire fighting system (wet and dry)

Pic of existing apt (Lounge & Dining)

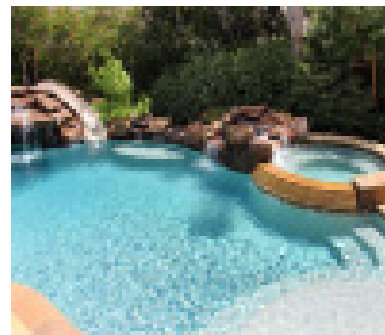


STATE-OF-THE-ART FACILITIES

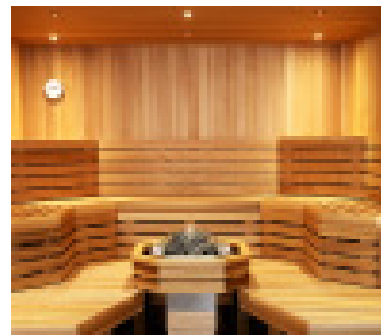
- Gated community living.
- The best location with breathtaking views.
- Reception hall with I.T equipped visitor's suite for corporate guests.
- Air-conditioning, designer's kitchens & wardrobes (optional).
- Foolproof mechanical and electrical systems.
- Plumbing & electrification for A.C will be provided for each apartment.
- State-of-the-art clubhouse facility: swimming pool, sauna and gym.
- Children play area, barbeque area, indoor games.
- Each block is facilitated with a branded passenger and cargo lift.
- Double basement car parking.
- Project's own uninterrupted power supply.
- Reverse osmosis plant to ensure 24 hours water supply.
- Garbage collection space.

THE WORLD CLASS SECURITY AND SAFETY

- Audiovisual links for each apartment to security desk.
- Security desk at entrance lobbies.
- 24/7 electronics surveillance (cctv monitoring).
- Card key / pin code / finger print / hand geometry access system at strategic points.
- Separate reception for visitors.
- No access for vehicle except ambulance & fire engine is allowed on ground level.
- Panic button in each apartment for emergency situation.
- Fire fighting system (wet & dry).
- Entry in parking through automatic barrier.
- Separate emergency fire exit stairs (pressurized).
- Double gated and secure community entrances.
- Care taking service after possession.
- Leisure and recreational facilities.



SWIMMING POOL



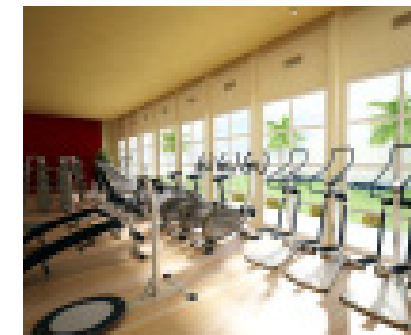
SAUNA



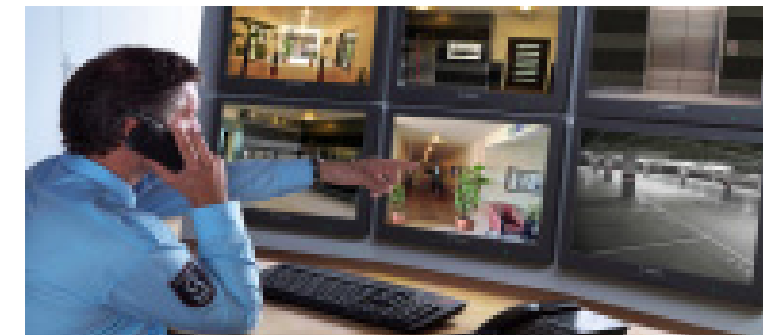
BADMINTON COURT



KIDS PLAY AREA



GYM



CLOSE CIRCUIT TV MONITORING



FIRE FIGHTING SYSTEM

The Essence of lavish living !

The luxurious living is what we offer !

Project consultants

Architects



Structural Consultants



Electrical Consultant



Mechanical Consultant



Advertising Consultant



Disclaimer : The information and layout plans produced in this folder are subject to change when and where required by the developer or on the demand of the authority/authorities. All art renderings, illustrations, pictures, photographs and other graphic presentations and references in the folder are impressions only, all dimensions of an apartment are including walls, all above do not constitute any part of the formal contract or deal.

Realize your dream
lakhani presidency



LAKHANI

Lakhani builders

Serving since last 25 years, handed over many residential and commercial projects within the promised period with unmatched quality and amenities.



**LAKHANI
BUILDERS**

Head Office:
4th Floor, Batool Arcade, SB-4, Block 13-B,
University Road, Gulshan-e-Iqbal, Karachi, Pakistan.
Tel: +9221 - 34985957 & 73
Fax: +9221- 34973531
www.lakhanibuilders.com
info@lakhanibuilders.com



Site Office:
Plot # 1, Survey #42, off National Stadium Road
Karachi, Pakistan.
Tel: + 9221- 34825519 & 20
Cell: + 92300 - 8984243
www.lakhanipresidency.com
info@lakhanipresidency.com

Dubai Contacts :
Cell: +971 50 2571812 , +971 55 8771790 , +971 55 8034231