

# PROFILE

**ElekEn** Associates

---

MEP & IT Consultants

# INDEX

	T I T L E	
0.0	INDEX	Page A-1
1.0	INTRODUCTION	Page B-1/1
2.0	ABOUT US	Page C-1/2
3.0	SERVICES	
	Electrical	Page D-1/7
	Mechanical	Page D-6/7
	Information Technology	Page D-6/7
4.0	KEY PEOPLE	Page E-1/5
5.0	CLIENTS	
	Architects	Page F-1/4
	Major Organization	Page F-3/4
6.0	PROJECTS	
6.1	Corporate	Page G-1/15
6.2	Mixed-Use	Page H-1/7
6.3	Residential	Page I-1/6
6.4	Retail	Page J-1/12
6.5	Health	Page K-1/6
6.6	Education	Page L-1/6
6.7	Industrial	Page M-1/2
6.8	Infrastructure	Page N-1/1
6.9	Hospitality	Page O-1/3
6.10	Misc	Page P-1/5
6.11	International	Page Q-1/5

# INTRODUCTION

## INTRODUCTION

---

ElekEn Associates is Pakistan's leading Consulting Engineering Firm offering complete Electrical, Mechanical & Plumbing expertise as well as Specialized Services to virtually all sectors, in Pakistan & UAE. Operating in the industry since 1989, ElekEn Associates have risen to prominence by contributing our services to hundreds of local and international projects of sizable proportions and diverse types. Our rich and growing portfolio contains a large number of diverse projects in virtually all sectors including Retail, Hospitality, Healthcare, Education, Residential, Industrial and more. ElekEn Associates have recently extended their services portfolio to IT Consulting and are currently providing IT Consulting services to two prominent Karachi-based retail clients.

Through a blend of engineering vision and cutting edge technology, ElekEn accomplishes its winning goals. The working method we follow adapts to the need of being continually innovative and receptive to the changing demands of modern architecture. ElekEn arrives at the best solution via a multi-disciplinary approach that combines engineering skills with a thorough understanding of the infrastructure, material technology and environmental best practice.

At ElekEn we optimize our professional expertise to design best value solutions that combine form, function and performance. We aim at designing engineering systems that ensure lifetime savings and comfort for both clients and users

## ABOUT ElekEn

## ABOUT ElekEn

---

### ElekEn

At a Glance

Established in .....	1989
Projects Completed .....	Over 600
Consulting License No. ....	Consult-736
National Tax Number .....	654937-3
Affiliations.....	PEC
	IEEEP
	ACEP
	FPAP

### Brief History

It was in 1989 when Mr. Asghar H. Siddiqui, with a sound five-year long experience in MEP consultancy and project management, decided to launch his own engineering venture, christening it **ElekEn**. He proved his mettle through perseverance and quality engineering and served for some of the country's major clients. The good work, focused on client satisfaction and based on the most current industry standards and innovations, gave a boost to his clientele, and projects both local and foreign came flooding in. ElekEn's victorious 19-year lifespan is full of numerous landmark achievements that include a range of mega projects with some of the biggest names in the fields of architecture and engineering.

**ElekEn**, having started from a one-man enterprise, has now grown into a company of 30 plus workforce and is geared up for further local and global expansion. With more than 600 completed projects in its portfolio and many other impressive projects in hand, ElekEn is fast becoming a household name in both local and international engineering and architectural industries.

### Our Associates

**M/s. SEM Engineers** have a vast experience in the field HVAC, Plumbing, Public Health etc. SEM Engineers established in 1988 and have got more than 50% projects with ElekEn Associates.

**M/s. Ainul Abedin Consulting Engineers**, a renowned consultant having more than 35 years experience in the field of Cogeneration and District Energy System.

## CONTACT US

---

### Head Office (Karachi)

#### Address:

513, R.S.M Square, Plot E-1,  
Shaheed-e-Millat Road, Karachi.

#### Phone

92-021-3455-2037

92-021-3455-1602

92-021-3432-5537

92-021-3432-5538

#### Fax

92-021-3438-0154

#### E-mail

eleken@eleken.com

asghar@eleken.com

#### Website

[www.eleken.com](http://www.eleken.com)

### ElekEn on Social Networks

You can also connect with ElekEn Associates on these online social networks:



[www.linkedin.com/company/1056071](http://www.linkedin.com/company/1056071)



[www.facebook.com/ElekEn1](http://www.facebook.com/ElekEn1)



[www.twitter.com/ElekEn1](http://www.twitter.com/ElekEn1)



[www.youtube.com/ElekEn1](http://www.youtube.com/ElekEn1)

# SERVICES



## SERVICES

---

ElekEn's MEP engineering services are for today's built environment. We understand the key factors involved in any building system and design our services to be functional, economical and inspirational. Making sure that our services fully meet the needs not only of clients and users but also of time and current market trends, we design our MEP solutions that are 100% supportive of the building's purpose. ElekEn has successfully played a change agent in the local industry by making industrialists and developers realize that good design goes beyond the physical fabric of the building and professional MEP consultancy can save them and the users a great deal of cost and trouble in the long run. Having worked in partnership with virtuoso architects and engineers of the world, we know how to optimize our expertise to deliver the best value services to our clients.

### Electrical

Electrical engineering is ElekEn's area of emphasis. Having a vast, diversified and inspiring experience in the field of electrical services, we provide full range of electrical system solutions that meet the challenging power needs of the time. We work closely with our client's right from concept to commissioning and to performance testing. It's only after having thorough infrastructural knowledge of each project and listening intently to our clients' particular requirements that we arrive at the best suited electrical solution.

ElekEn makes sure of designing electrical solutions that are low on power and cost, and high on performance and sustainability. With qualified engineers and continuous market research, ElekEn's dynamic and energy-efficient electrical solutions continue to make their way up in the global market.

### Medium Voltage System

- Power Generation
- Power Distribution

### Low Voltage System

- Power Generation
- Power Distribution
- Illumination
- Earthing / Grounding

### Low Current / ELV System

- Integrated Building Management System
- Fire Alarm and Suppression System
- Data and Voice Communication System
- Paging / Background Music System
- Nurse Call System
- Local Area Networking
- CCTV System
- Access Control System
- Intrusion Detection System
- CATV System
- Audio Video Intercommunication System
- Energy Management System
- Under Vehicle Inspection System
- Q-Management System
- Parking Guidance / Management System
- Canteen Management System

### Specialized Services

At ElekEn, we believe in designing electrical solutions which unite form and function and are energy-efficient to the core. Factors like sustainability and cost-efficiency are also considered as crucial while designing each electrical solution.

Out of our broad spectrum of electrical solutions, there are four fields of electrical services in which we are proud to have special expertise. These include:

- Generation / Cogeneration
- District Energy System
- Illumination / Lighting
- IBMS (Integrated Building Management System)
- Parking Guidance System
- Vetting, Review and Value Engineering

## Generation Co-generation and District Energy System

At ElekEn we realize the growing power needs in Pakistan as well as the world and offer best power solutions which deliver greater power and higher efficiency. We stand proud as market leaders in generation and cogeneration with our wealth of knowledge about the best equipment and processes, in addition to the vast market experience.

ElekEn is at the leading edge of design for low energy, high performance buildings and systems. Two key issues for today's organizations are steady rise in fuel prices and growing environmental concerns. At ElekEn, we take pride in our district energy systems which produce steam, hot water or chilled water at a central plant and then pipe that energy out to buildings in the "district" for space heating, domestic hot water heating and air conditioning. Our district energy systems can run on a variety of conventional fuels like oil, natural gas, coal etc, and because of their size, can also transition to use renewable fuels such as biomass, geothermal, and combined heat and power. Moreover, buildings equipped with our district energy systems have lower capital costs for their energy equipment as they don't need conventional boilers and chillers. And more interestingly, ElekEn's district energy systems save building space that can be used for other more valuable purposes.

Our bigger Cogeneration projects are covered by our associates **Ainul Abedin Consulting Engineers**, a specialist consultant company. The competitive edge we enjoy together in generation and cogeneration owes to the technological advantage and market knowledge that we possess. Based on the project's type and needs, we recommend the right generation/cogen solutions to our clients which ensure efficiency and sustainability without breaking their budget.

For more information about **Ainul Abedin Consulting Engineers**, visit [www.cogen-unlimited.com](http://www.cogen-unlimited.com)

## Lighting System And Controls

With a diversified experience in the field, we at ElekEn know how lighting designs vary from project to project to meet the building's essential purpose. We base our fully integrated lighting consultancy on both the nature and infrastructure of

the project and unique client requirements. ElekEn's expert lighting consultants know that every single project requires specialized lighting strategies and has its own budgetary and design constraints. With architecture getting more and more intricate and power needs rising further up, illumination design is continuing to get more challenging than ever.

With the expertise of combining appearance and functionality, ElekEn provides lighting solutions which satisfy client's aspirations and harmonize with the project's architecture. Power consumption is one factor that is most taken care of while devising individual lighting solutions. At ElekEn, we go the extra mile to design the most energy-efficient and creative lighting solutions.

ElekEn provides most high tech solution for centralized lighting control integrated with other LV and ELV systems, not only in office buildings but Malls, Auditorium, Hyper Markets, Conference Hall etc.

### **Integrated Building Management System**

With buildings getting taller, more complex and multi-purpose, a new need for managing their various functions from a single point is emerging. ElekEn's design for an integrated building management system (IBMS) features engineered systems within buildings to effectively ensure building safety, security, and comfort at a reasonable cost.

While designing our IBMS systems, we consider all the key factors which include design, structural behavior, building safety and security, occupant comfort, facilities management, sustainability, and life cycle cost analysis. IBMS solutions are fully integrated and help diverse building functions to work collaboratively. The building management solutions, ElekEn offers, cover the building envelope from all aspects ranging from systems for safety and security of the building to information technology, energy management etc. Some of the systems offered by ElekEn's IBMS are as follows:

- Fire Alarm and Suppression System
- Access Control System
- CCTV System / Under Vehicle Inspection System
- Parking Management and Guidance System
- Audio Video Intercommunication System
- Paging / Background Music System
- Nurse Call System

- Energy Management / Centralized Lighting Control System
- Queue Management System
- BMS
- Canteen Management System
- Security / Intruder Alarm System etc. etc.

### **Parking Guidance & Management System**

ElekEn is proud to be the first to have introduced a one-of-its-kind parking guidance and management system in Pakistan. Our parking guidance and management system is a highly innovative and practical solution to the growing parking troubles specially seen in bustling metropolises like Karachi.

The system works extremely intelligently and save the driver a great deal of time and trouble to find a vacant parking space. An electronic panel at the entrance of the parking lot transmits complete and clear information about the entire space distinctly identifying the free and occupied parking areas. As soon as a vehicle passes through the car park entrance the guidance system directs the driver reliably along the shortest route to the next available unoccupied parking space. Numerous LED display panels installed throughout the car park guide the drivers to the zones and isles with unoccupied parking spaces. Variable routing by means of graphical arrow symbols and use of intuitive multi-coloured signs are just few of the many features of ElekEn's car parking guidance and management system.

### **Vetting, Review and Value Engineering**

In addition to our direct engineering services, ElekEn also provides vetting, review and value engineering services on others' designs with the help of our virtuoso engineers. It is ElekEn's multi-disciplinary approach that makes it the consultancy of first choice. Our value engineering services are directed at analyzing designed building features, systems, equipment, and material selections for the purpose of achieving essential functions at the lowest life cycle cost consistent with required performance, quality, reliability, and safety. Our integrated, holistic approach helps to reduce running costs without impacting on clients' aspirations and offers alternative design solutions to optimize the expected cost/worth ratio of projects at completion. We create and promote ideas for maintaining or enhancing results while reducing life cycle costs.

## Mechanical

ElekEn's mechanical services are covered by our associates, a specialist consultant company called **SEM Engineers**. Working in association with SEM Engineers for 19 long years, ElekEn has served for a number of local and foreign clients and delivered low-cost, sustainable and eco-friendly HVAC (Heating, Ventilation, Air Conditioning) solutions.

As a team of committed individuals, **ElekEn** and **SEM** together continue to provide dynamic and environment-friendly HVAC solutions retaining our market leadership through technological edge and methodical industry research.

## Plumbing / Public Health

At ElekEn, we realize the need of the time to provide plumbing/public health solutions which are friendly to the environment besides being highly sustainable and cost-effective. We aim at offering plumbing solutions that are practical and sensitive, and strictly adhere to the international standards. Our vast knowledge of the complex social, economical, ecological and human health issues helps us arrive at the best solutions.

Making use of the best available technology and keeping ourselves abreast of the latest market trends and innovative equipment, we are able to meet client satisfaction and fulfill our promise to the environment.

We cover the whole plumbing/public health spectrum including Water Supply, Sewerage, Medical Gases and Fire Fighting.

## IT Services

For the very first time in Pakistan, ElekEn Associates introduce professional IT Consulting Services that help companies to optimize their technology, enhance productivity, reduce potential business risk and maximize return on investment.

We leverage the expertise in Information Technology Consulting, Network Solutions, IT Security implementations, Messaging & Collaboration Solutions to design, develop and implement end-to-end technology solutions. Our in-depth technical knowledge coupled with industry experience and the unique methodology enables us to successfully deliver the

project on time. Our commitment towards excellence and meritocracy reflects in the solutions we deliver.

ElekEn IT Team is engaged to deliver the following types of solutions to their customers.

- Network Solutions
- Messaging & Collaboration Solutions
- IT Security Implementations

### **Network Solutions**

ElekEn Network Solutions Team helps customers to implement common standards-based development and deployment environments. As a professional we understand the complexities which really require to setup and maintain the company's network infrastructure and there are numerous variables that need to be considered while developing the network. We mostly used Microsoft & Cisco platforms for deployment. Key areas include:

- LAN Solutions
- WAN Solutions
- Remote Access Solutions

### **Messaging & Collaboration Solutions**

ElekEn's Network Solutions team also provides Messaging & Collaboration solutions to the customers and customize according to needs of the customers. This includes Lotus Domino Solutions, M daemon server setup and Microsoft Exchange Server setup etc.

### **IT Security Implementations**

The dependence on computers and networks has been growing steadily as a result the severity of risk has been quite evident. You cannot afford to take chances to safeguard your information and systems. Our IT Security team addresses all aspects of information protection. We can help our clients in the following areas:

- Developing / Devising IT Security Policies and Procedures
- Security and Vulnerability Assessments
- IT Audits and Reviews of the Infrastructure
- Antivirus Solutions
- Hard Disk & Media Encryption Solutions

## KEY PEOPLE



## KEY PEOPLE

---

At ElekEn, we believe that our employees are our most invaluable asset. Our workforce includes some of the brightest minds in the fields of engineering and designing. We have no doubt that it is because of the skill base, expertise, and professional loyalty of our employees that ElekEn has been able to maintain its innovative edge.

Here is a full list of ElekEn valued employees:

### **Asghar H. Siddiqui**

CEO / Principal Engineer

Studied electrical engineering at NED University of Engineering & Technology. He is the CEO/Principal Engineer and the founder of the practice. Asghar is also a member of Pakistan Engineering Council, Institute of Engineering Pakistan, and Institute of Electrical Engineers Pakistan.

At the time of founding ElekEn Associates, Asghar H Siddiqui had five years' experience in maintenance, execution, project management and consultancy. He had worked on numerous projects during this period with varying responsibilities. Some of his major works prior to starting ElekEn Associates include:

- Installation and project management of Air Field Lighting at Quetta Airport
- Execution of Electrical Project at PNS Mehran, ACIL (presently DADEX Eternit)
- Designing and Planning of : Academic Complex (USAID) Project at Islamabad
- Residential and Commercial Buildings
- Tanneries, Garment Factories

The engineering world is in a constant state of change, he says, and our consultancy and practices must change with it. He says that sometimes it's really hard to apply the latest business practices given the financial and structural limitations, but "loving the challenge is what ElekEn is all about."

### **Work History:**

- **United Electrical Company (1985 - 1986)**  
Site Engineer/Cost Engineer

#### **Projects:**

- ACIL
- PNS - Mehran

- **A.S Consultant (1986 – 1987) & (1988 – 1989)**  
Design Engineer

**Projects:**

- USAID Project – Islamabad
- ABN Amro Bank
- Sasi Homes
- Dolmen Arcade
- Dolmen Courts
- Bilal Garments

- **T.N International (1987 – 1988)**  
Resident Engineer

**Projects:**

- Air Field Lighting project – Quetta Airport

- **ElekEn Associates (1989 – to date)**  
CEO/Principal Engineer

## **Minhaj Ahmed Siddiqui**

Manager Projects

Mr. Minhaj Ahmed joined ElekEn Associates in Sep 2006 and proved his mettle not only as a seasoned engineer, but also as a helpful mentor for his junior staff. His professional history prior to ElekEn Associates comprises work at some of Pakistan's leading engineering firms. He did his DAE (Elect.) from Govt. College of Technology, Karachi. His major projects with ElekEn Associates include Metro Karachi, Rehman Medical Center Peshawar, Al Najeebi Electronic Bazar Karachi and City Center Karachi.

## Engineering Team

---

1. **M. Sohail**  
Senior Site Engineer  
D.A.E  
18 years work experience
  
2. **Azfar Saleem**  
Design Engineer  
B.E.  
2 years work experience
  
3. **Farhan Ali**  
Site Engineer  
B.E.  
2 years work experience
  
4. **Fatima Reyaz**  
Assistant Design Engineer  
B.E.  
3 years work experience
  
5. **Syed Mojiz Mehdi**  
Assistant Design Engineer  
B.E.  
2 year work experience
  
6. **M. Nazeer Ahmed**  
Cost Engineer  
D.A.E.  
3 years work experience
  
7. **Fareha Mazhar**  
Assistant Engineer  
B.E.  
2 years work experience
  
8. **Hammad Uz Zaman**  
Assistant Engineer  
B.E.  
1 years work experience

## CAD Team

---

1. **M. Saleem Sohan**  
In-Charge CAD Department  
(23 years of work experience)
  
2. **M. Javed**  
Senior CAD Draughtsman  
(22 years of work experience)
  
3. **M. Zahid**  
Associate CAD Draughtsman  
(14 years of work experience)
  
4. **Shahzaib Naeem**  
Associate CAD Draughtsman  
(7 years of work experience)
  
5. **Zubair Ahmed**  
Associate CAD Draughtsman  
(8 years of work experience)
  
6. **Syed Mohammad Haider**  
Junior CAD Draughtsman  
(3 years of work experience)
  
7. **Waqas Riyaz**  
Junior CAD Draughtsman  
(3 years of work experience)
  
8. **Arsalan Uddin**  
Junior CAD Draughtsman  
(1 years of work experience)

## Administration

---

1. **M. Anwer Hussain**  
Admin Officer
2. **M. Arsalan Ashfaq**  
Administrative Assistant
3. **Jarrar Hussain**  
Account's Officer
4. **Shahana Naz**  
Receptionist / Phone Operator
5. **Jamshed Ali**  
Office Assistant
6. **Hameed Ahmed**  
Office Assistant
7. **Muhammad Khalid**  
Driver

# CLIENTS

## ElekEn Has Served for:

---

### Architects

ARSHAD SHAHID ABDULLA	NAEEM LAKHANI ASSOCIATES
ABDUL RAZZAK ASSOCIATES	TARIQ A QAISER ASSOCIATES
HIJAZ KASTURI ASSOCIATES MALAYSIA	NIHON SIKKIE JAPAN
AL IMAM INTERPRISES	KASB DEVELOPERS
ISSAC MAZEN LLC USA	DWP
SIKANDAR AJAM ASSOCIATES	PAYETTE ASSOCIATES USA.
ESI ENGINEERING	ERGA GROUP
RIZKI AND CO.	NAJMI BILGRAMI COLLABORATIVE
AHED ASSOCIATES	ALLIANCE CONSULTANTS
ARCOP PVT. LTD	DAZ (DANISH ZUBI)
HABIB FIDA ALI	SILWAT AFZAL
EBRAHIM & CHAUHDARY	PARC INTERNATIONAL
ACE	ARCHITECT PLUS
NAQVI & SIDDIQUI	SHIRAZI ASSOCIATES
SPATIAL CONCEPT	ADNAN ASDAR ASSOCIATES
PEE DEE ASSOCIATES	SADAT ASSOCIATES
S + N DESIGN	Y A SAFRI ASSOCIATES
ENARCO	KAN KAN
GANDHARA CONSULTANT	FAROOQ SABZWARI SHAHAB
ARCH. VISION	ENVIRON ENVISION
GHANI ANSARI PARTNERSHIP	SHAHAB GHANI ASSOCIATES
ZEESHAN ENGINEERS PVT. LTD.	YUSUF CHOWKSY

## ElekEn Has Served for:

---

### Architects

SHAKIL HYDER

ARCHITECT RESOURCES

ANJUM ADIL

MUSHTAQ AND BILAL

AKBAR MAHMUD QAIZAR ASSOCIATES

NAHEED MASHOOQULLAH

KHATRI ASSOCIATES

ISBAH HASSAN & ASSOCIATES

FAREED ASSOCIATES

AXIS DESIGN

PLANNING & CONSTRUCTION  
MANAGEMENT (AKDM-PCM)

SAMYA ABIDI

SHEIKH ASSOCIATES

MASS INTERNATIONAL

CONSULT-TECH INTERNATIONAL

D CON DESIGN CONSTRUCTION

H3 ARCHITECTS

KAFEEL HUSSAIN ASSOCIATES

THE PEAK

V-PLAN

THE ARCHITECT

NADEEM UL HASAN &  
ASSOCIATES



## ElekEn Has Served for:

---

### Major Organizations

- Agha Khan Housing Board
- State Bank of Pakistan
- National Bank of Pakistan
- MCB
- UBL
- ABL
- Deutsche Bank
- Soneri Bank
- Bank Al Habib
- Meezan Bank
- Saudi Pak Bank
- Standard Chartered Bank
- Private Depart. Sheikh Zayed Bin Sultan
- PSO
- CALTEX
- SHELL
- Pakistan Herald-Dawn TV
- American Express Bank
- Mashreq Bank
- Askari Commercial Bank
- Hong Kong Shanghai Bank
- Faysal Bank Ltd.
- Khyber Bank Ltd.
- NIB Bank Ltd.
- Proctor & Gamble
- Arif Habib Bank
- Jahangir Siddiqui Group
- JPMC Neurosurgery Center
- College of Physician & Surgeons
- NED University
- KFC
- Pizza Hut
- Mc'Donalds
- TCS Office
- U-fone
- Emirates Airlines
- Karachi Export Promotion Zone
- NICVD
- American Life Insurance Co.
- Stock Exchange
- Sapphire Textiles
- Toyota Indus Motors
- Karachi Port Trust
- Al Ghurair Giga

- Saima Builders
- Sum Sum Builders
- Teamaventures
- Machyara Group
- Vincy Enterprises
- IBM
- Fazal Textile Mills
- Harmain Builders
- QM Builders
- Pakistan Cricket Board
- Habib Bank Limited
- Habib University Foundation
- Lakhani Builders
- Hotel Margala

# PROJECTS

CORPORATE



**G&t TOWER**

Project	H.O of Gatro-nova Pakistan
Location	PIDC, Karachi
Owners	Gatron / Novatex
Architect	Abdul Razzak Associates Nadeem-ul-Hassan Associates
Status	Construction in progress
Built-up Area	200,000 Sft

**Project Brief:**

Head-office building for M/s. Novatex, consist of a basement for Parking, GF for reception and meeting rooms, 4 parking floors, 8 office floors and roof top for power house and HVAC plant room.

**Utility Power:**

- Designed Electrical Load                      2050 KW
- Anticipated Max. Demand                      1650 KW
- Total Generation Capacity                      1900 KW
- Prime Power through:
  - 1 x 1 MW + 1 x 625 KW + 1 x 300 KW gas operated generators and stand-by Power through diesel operated generators

**Scope of ElekEn's Services:**

Electrical and Allied Engineering Services includes, Design Development, Tender Documentation and Top Supervision.

**Low Voltage Systems:**

- Self-Power Generation
- Lightning Protection
- Power Distribution
- Lighting Systems and Control
- Emergency Lighting
- Façade Lighting

**Low Current System:**

- Parking Management System
- Voice, Data and Video Communication
- Fire Alarm System
- IBMS (Integrated Building Management System)
- Access Control

**Salient Features**

- **IBMS for** CCTV, Access Control, Fire Alarm, Paging parking management, load management etc.
- Bus way system for Power Distribution
- 100% self generation through Cogeneration System



**ARIF HABIB CENTRE**

Project	Arif Habib Group H.O Building
Location	Karachi, Pakistan
Owners	Arif Habib Group
Architect	ARCOP Pvt. Ltd.
Status	Completed
Built-up Area	75,000 Sft

**Project Brief:**

The Building consists of G+2 Floors & Cafeteria Block.

**Utility Power:**

- Designed Electrical Load                      1200 KW
- Anticipated Max. Demand                      960 KW
- Proposed Generation Capacity                1300 KW
- Prime Power through:
  - 1 x 1 MW + 1 x 300 KW gas operated generators and stand-by power through diesel operated generators

**Scope of ElekEn's Services:**

Electrical and Allied Engineering Services  
Design Development, Tender Documentation  
and Top Supervision

**Low Voltage Systems**

- Co-generation
- Lightning Protection
- LV Power Distribution
- Lighting Systems and Control
- Emergency Lighting
- Façade and Area lighting
- UPS System for Electronic equipment

**Low Current System**

- Voice, Data and Video Communication
- Fire Alarm & Detection System
- IBMS (Integrated Building Management System)
- Access Control System
- Vehicle Scanning System
- Canteen Management System
- FM-200 Fire Suppression System
- CCTV System
- Emergency Evacuation System

**Specialized Services**

- R.O Water Plant
- Elevators

**Salient Features**

- Cogeneration for Power and Air-conditioning.
- Centralized Lighting Control using C-Bus System.
- Façade and Area lighting.
- Low Current Systems Integration for CCTV, Access Control, load monitoring and Fire Alarm System etc.

**HABIB BANK BUILDING**

Project	Habib Bank Limited
Location	Mai Kolachi Road, Karachi
Owners	Habib Bank
Architect	Surround Design Studio
Status	Design Development
Built-up Area	75,000 Sft

**Project Brief:**

This building consists Ground Floor, Cafeteria Block and 5 floors for Offices.

**Utility Power:**

- Designed Electrical Load                      845 KW
- Anticipated Max. Demand                      643.3 KW
- Proposed Generation Capacity                800 KW
- Prime Power through:
  - 1 x 1 MW + 1 x 600 KVA + 1 x 200 KVA and stand-by power through diesel operated generators

**Scope of ElekEn's Services:**

Electrical and Allied Engineering Services  
Design Development, Tender Documentation and Top Supervision

**Low Voltage Systems**

- Co-generation
- Lightning Protection
- LV Power Distribution
- Lighting Systems and Control
- Emergency Lighting
- Façade and Area lighting
- UPS System for Electronic equipment

**Low Current System**

- Voice, Data and Video Communication
- Fire Alarm & Detection System
- IBMS (Integrated Building Management System)
- Access Control System
- FM-200 Fire Suppression System
- CCTV System
- Emergency Evacuation System

**Specialized Services**

- Elevators

**Salient Features**

- Cogeneration for Power and Air-conditioning.
- Centralized Lighting Control using C-Bus System.
- Façade and Area lighting.
- Low Current Systems Integration for CCTV, Access Control, load monitoring and Fire Alarm System etc.



## TOTAL ATLAS LUBRICANT



Project	Office of Total Atlas Lubricant
Location	Bahria Complex, Karachi
Owners	Atlas Lubricants
Architect	ARCOP Pvt. Ltd.
Status	Completed
Built-up Area	9,300 Sft

**Project Brief:**

This is a state of art office with all modern technologies.

**Scope of ElekEn's Services:**

Electrical and Allied Engineering Services, Design Development, Tender Documentation and Top Supervision

- Utility Power Distribution
- Conditioned Power Supply
- Lighting Systems and Control
- Emergency Lighting
- Earthing System
- Voice and Data Communication
- Fire Alarm & Detection System
- Access Control System
- Smart Board Presentation System
- CCTV System
- Stand-By Power Generators

## ABBOTT OFFICE



Project	Office of Abbott Pakistan
Location	8 <sup>th</sup> Floor Faysal House, Karachi
Owners	Abbott Laboratories
Architect	Shahab Ghani Associates
Status	Completed
Built-up Area	15,000 Sft

**Project Brief:**

Office of Abbott Laboratories at Faysal House, with innovative design and latest technologies.

**Scope of ElekEn's Services:**

Electrical and Allied Engineering Services, Design Development, Tender Documentation and Top Supervision

- Utility Power Distribution
- Conditioned Power Supply
- Lighting Systems and Control
- Emergency Lighting
- Voice and Data Communication
- Fire Alarm & Detection System
- Access Control & CCTV System
- Earthing System
- Video Conferencing
- Smart Board Presentation System
- Short throw multimedia projection
- Stand-By Power Generators

## DADEX ETERNIT



Project	Dadex House, H.O Building
Location	Shahrah-e-Faisal, Karachi
Owners	Dadex Eternit Ltd.
Architect	Abdul Razzak Associates
Status	Completed
Built-up Area	70,000 Sft

**Project Brief:**

B+G+7 Floors, Head Office Building for Dadex Eternit

**Utility Power:**

- Designed Electrical Load                      850 KW
- Anticipated Max. Demand                      700 KW

100% stand-by back-up power through DG Sets.

**Scope of ElekEn's Services**

Electrical and Allied Engineering Services  
Design development and Top Supervision

- Sub Station Equipment Design
- Stand-by Power Supply System
- Lightning Protection & Power Distribution
- Lighting Systems and Control
- Emergency Lighting
- Voice, Data and Video Communication
- Fire Alarm & Access Control System

## THE COMPETENCY CENTRE



Project	The Competency Center
Location	DHA, Karachi
Owners	Clipsal Pakistan
Architect	Rizwan Sadiq Associates
Status	Completed
Built-up Area	15,000 Sft

**Project Brief:**

This is an stylish show room owned by Clipsal Pakistan to display their products.

**Scope of ElekEn's Services**

Electrical and Allied Engineering Services  
Design development and Top Supervision

- Stand-by Power Supply System
- Lightning Protection
- Power Distribution
- Lighting Systems and Control
- Emergency Lighting
- Voice and Data Communication
- Fire Alarm & Detection System
- Access Control System
- CCTV System
- Power Bus Way System
- Earthing
- Wiring for Low Current System

**CORPORATE CITY**

Project	Corporate City
Location	I.I Chundrigar Road, Karachi
Owners	Al Arz Estate & Developers
Architect	ARCH Vision
Status	Design Development
Built-up Area	75,000 Sft

**Project Brief**

This 20 storied ultra-modern business centre is ideally located on I I Chundrigar road. It's location amidst the business hub of Karachi Pakistan gives it a distinct advantage. Smartly sized ground floor shops & environment-friendly, custom-made & international quality corporate offices on upper floors duly surrounded by all modern-day amenities & urban conveniences are up for grabs.

**Utility Power:**

- Designed Electrical Load                      2 MW

**Scope of ElekEn's Services**

Electrical and Allied Engineering Services, Design Development, Tender Documentation and Top Supervision

**Low Voltage Systems**

- Lightning Protection
- LV Power Distribution
- Lighting Systems and Control
- Emergency Lighting
- UPS System for Electronic equipment

**Low Current System**

- Voice, Data and Video Communication
- Fire Alarm & Detection System
- IBMS (Integrated Building Management System)
- Access Control System
- FM-200 Fire Suppression System
- CCTV System

**Specialized Services**

- Elevators

**Salient Features**

- Cogeneration for Power and Air-conditioning.
- Centralized Lighting Control using C-Bus System.
- Façade and Area lighting.
- Low Current Systems Integration for CCTV, Access Control, load monitoring and Fire Alarm System etc

**EFU LIFE INSURANCE**

Project	EFU Head Office Building
Location	Karachi, Pakistan
Owners	EFU
Architect	Habib Fida Ali
Status	Design Development Phase
Built-up Area	160,000 Sft
ElekEn's Services	Stand-by Power Supply Power Distribution Lighting Voice and Data CCTV Fire Alarm System Back-ground Music System

**PROCTER & GAMBLE**

Project	Head Office of P&G
Location	Karachi, Pakistan
Owners	Procter & Gamble
Architect	ARCOP Pvt. Ltd
Status	Completed
Built-up Area	12,000 Sft
ElekEn's Services	Stand-by Power Supply LV Power Distribution Lighting System Voice and Data CCTV System Fire Alarm System Back-ground Music System Fire Suppression System

**JS CENTRE**

Project	Corporate Office Building
Location	Karachi, Pakistan
Owners	JS Group
Architect	Parc International
Status	Construction in progress
Built-up Area	415,462 Sft
ElekEn's Services	Stand-by Power Supply Power Distribution Lighting Voice and Data CCTV Fire Alarm System Back-ground Music System

**LIBERTY BOOKS**

Project	Liberty Books
Location	Karachi, Pakistan
Owners	Liberty Books
Architect	TAQ Associates
Status	Completed
Built-up Area	18,200 Sft
ElekEn's Services	Stand-by Power Supply Power Distribution System Lighting Systems Voice and Data CCTV System Fire Alarm System

## IBM HEAD OFFICE



Project	Head Office of IBM Office PH 1
Location	Karachi, Pakistan
Owners	IBM Pakistan
Architect	Najmi Bilgrami Collaborative
Status	Completed
Built-up Area	3,000 Sft

**Project Brief:**

It is an international quality corporate office having latest data communication and duly surrounded by all modern-day amenities.

**Scope of ElekEn's Services:**

Design development and Top Supervision

**Low Voltage Systems**

- Lightning Protection
- LV Power Distribution
- Lighting Systems and Control
- Emergency Lighting
- UPS System for Electronic equipment

**Low Current System**

- Voice, Data and Video Communication
- Fire Alarm & Detection System
- IBMS (Integrated Building Management System)
- Access Control System
- FM-200 Fire Suppression System
- CCTV System

## EMIRATES OFFICE



Project	Office of Emirates Airline
Location	Karachi, Pakistan
Owners	Emirates Pakistan
Architect	Deluxe Interiors
Status	Completed
Built-up Area	12,210 Sft
ElekEn's Services	Stand-by Power Supply Power Distribution Lighting Voice and Data CCTV Fire Alarm System Back-ground Music System

## GALILEO PAKISTAN

Project	Office Building of Galileo
Location	Karachi, Pakistan
Owners	Galileo Pakistan
Architect	ARCOP Pvt. Ltd
Status	Construction in Progress
Built-up Area	11,350 Sft (G + 2 Floors)
ElekEn's Services	Utility Power Distribution Conditioned Power Supply Lighting Systems and Control Emergency Lighting Voice & Data Communication Fire Alarm & Access Control AV Intercom System UPS System Earthing System Multimedia System CCTV & CATV System Stand-By Power Generators



**AXACT HOUSE**

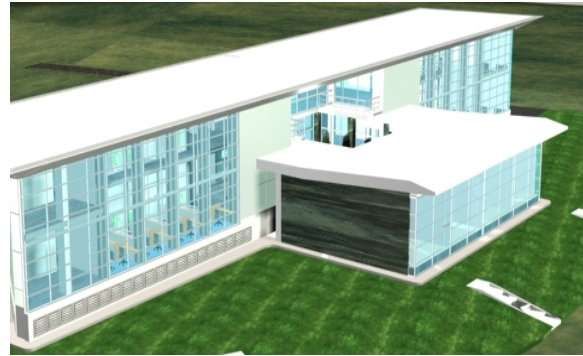


Project	IT House of Axact (B+G+4 floor)
Location	Karachi, Pakistan
Owners	Axact
Architect	S+N Design
Status	Completed
Built-up Area	42,000 Sft
ElekEn's Services	Stand-by Power Supply Power Distribution Lighting Voice and Data CCTV System Fire Alarm System

**UDL OFFICE BUILDING**

Project	Office Building of UDL
Location	Karachi, Pakistan
Owners	United Distributors Pakistan
Architect	ARCOP Pvt. Ltd
Status	Construction in Progress
Built-up Area	35,000 Sft (B+G+4 Floors)
ElekEn's Services	Utility Power Distribution Conditioned Power Supply Lighting Systems and Control Emergency Lighting Voice & Data Communication Fire Alarm System Access Control System AV Intercom System UPS System Earthing System Multimedia System CCTV & CATV System Stand-By Power Generators

**SOUTHERN GROUP BUILDING**



Project	Southern Group Office Building
Location	Islamabad, Pakistan
Owners	Southern Group
Architect	S+N Design
Status	Completed
Built-up Area	21,300 Sft
ElekEn's Services	Power Distribution Lighting Voice and Data CCTV Fire Alarm System Back-ground Music

**CLIPSAL PAKISTAN**



Project	Head Office of Clipsal Pakistan
Location	Korangi, Karachi, Pakistan
Owners	Clipsal Pakistan
Architect	Naeem Lakhani Architects
Status	Completed
Built-up Area	38,000 Sft
ElekEn's Services	Electrical LV & LC System

**BAHRIA ICON TOWER**

Project	Bahria Icon Tower
Location	Clifton, Karachi
Owners	Bahria Town
Architect	Arshad Shahid Abdulla
Status	Construction in Progress
ElekEn's Services	Electrical Infrastructure for 19 MW Co-Generation Power Plant

**TCS HEAD OFFICE**

Project	TCS Cargo Head Office
Location	Karachi, Pakistan
Owners	TCS Pakistan
Architect	TAQ Associates
Status	Completed
Built-up Area	12,900Sft
ElekEn's Services	Power Distribution Lighting & CCTV System Voice & Data Communication Fire Alarm & Background Music

**ORIX LEASING**

Project	Head Office Building of Orix
Location	Korangi, Karachi
Owners	Orix Pakistan
Architect	Y.A Safri Associates
Status	Completed
Built-up Area	24,500 Sft
ElekEn's Services	Stand-by Power Power Distribution Internal Lighting. CCTV Fire Alarm System Voice and Data

**UFONE HEAD OFFICE**

Location	Islamabad, Pakistan
Status	Completed
Built-up Area	22,000 Sft (B+G+2 Floors)
ElekEn's Services	Stand-by Power Supply Power Distribution & Lighting Voice & Data Communication CCTV & Fire Alarm System HVAC & Plumbing

**BANK AL-HABIB**

Project	<b>BAH Corporate office</b> G+3 Floors Building with branch office at GF and corporate office in remaining floors
Location	Zamzama, Karachi
Owners	Bank Al-Habib
Architect	Arch. Mubarak
Status	Completed
Built-up Area	20,000 Sft
ElekEn's Services	Stand-by Power Supply Power Distribution Lighting Voice and Data CCTV Fire Alarm System

**OFFICE OF MR. JAHANGIR SIDDIQUI**

Project	Main office for Jahangir Siddiqui & Company
Location	Chappal Plaza, Karachi
Interior Design	Arshad Shahid Abdulla
Covered Area	11000 sft
ElekEn's Services	Stand-by Power Supply Power Distribution Lighting Voice and Data CCTV Fire Alarm System HVAC Plumbing Back-ground Music

**S.M. TRADERS**

Project	H.O Building of SM Traders
Location	S.I.T.E, Karachi
Owners	S.M. Traders
Architect	DAZ, Danish Zubi
Status	Completed
Built-up Area	45,000 Sft
ElekEn's Services	Power Distribution Lighting Voice & Data Communication CCTV System Fire Alarm System

**SAMBA BANK**

Project	<b>SAMBA BANK</b>
Location	EPOC Heights Lahore
Architect	Arshad Shahid Abdullah
Interior Design	Arshad Shahid Abdullah
Covered Area	70,000 Sft
ElekEn's Services	Stand-by Power Supply Power Distribution Lighting Voice and Data CCTV Fire Alarm System HVAC Plumbing Back-ground Music



**ASKARI BANK**

Location	Karachi, Pakistan
Owners	Askari Bank
Architect	Spatial Concept
Status	Completed
Built-up Area	6,000 Sft
ElekEn's Services	Stand-by Power Supply Power Distribution & Lighting Voice & Data Communication CCTV & Fire Alarm System

**NATIONAL BANK OF PAKISTAN**

Project	Renovation of 4 No. Office Floors
Location	Karachi, Pakistan
Owners	National Bank
Architect	ARCOP Pvt. Ltd
Status	Completed
ElekEn's Services	Stand-by Power Supply Power Distribution & Lighting Voice & Data Communication CCTV & Fire Alarm System

**ASKARI BANK**

Location	DHA, Karachi
Owners	Askari Bank
Architect	Spatial Concept
Status	Completed
Built-up Area	20,000 Sft
ElekEn's Services	Stand-by Power Supply Power Distribution & Lighting Voice & Data Communication CCTV & Fire Alarm System

**NATIONAL BANK OF PAKISTAN**

Project	NBP Zonal Office Building
Location	Chistian, Pakistan
Owners	National Bank
Architect	By in-house NBP facility
Built-up Area	26,000 Sft
ElekEn's Services	Stand-by Power Supply Power Distribution & Lighting Voice & Data Communication CCTV & Fire Alarm System

**NATIONAL BANK OF PAKISTAN**

Project	NBP Zonal Office Building
Location	Bawalnagar, Pakistan
Owners	National Bank
Architect	By in-house NBP facility
Built-up Area	35,000 Sft
ElekEn's Services	Stand-by Power Supply Power Distribution & Lighting Voice & Data Communication CCTV & Fire Alarm System

**NATIONAL BANK OF PAKISTAN**

Project	NBP Zonal Office Building
Location	Bawalpur, Pakistan
Owners	National Bank
Architect	By in-house NBP facility
Built-up Area	12,000 Sft
ElekEn's Services	Stand-by Power Supply Power Distribution Lighting System Voice & Data Communication CCTV System Fire Alarm System Background Music System

**NATIONAL BANK OF PAKISTAN**  
(More than 15 Branches)

Project	NBP Branches
Location	Pakistan
Owners	National Bank
Architect	By in-house NBP facility
Built-up Area	2,500 – 4,000 Sft per Branch
ElekEn's Services	Stand-by Power Supply Power Distribution Lighting System Voice & Data Communication CCTV System Fire Alarm System Background Music System

**BANK AL-HABIB**

Project	Main Branch, Bank Al-Habib
Location	I.I Chundrigar Road Karachi
Owners	Bank Al-Habib
Architect	TAQ Associates
Built-up Area	17,000 Sft
ElekEn's Services	Stand-by Power Supply Power Distribution Lighting System Voice & Data Communication CCTV System Fire Alarm System Background Music System

**HABIB BANK PLAZA**

Project	<b>1<sup>st</sup> and 2<sup>nd</sup> Floor.</b> Head Office, Karachi
Location	I.I Chundrigar Road Karachi
Architect	Pee Dee Associates
Status	Completed
Covered Area	42,000 sft.
ElekEn's Services	Stand-by Power Supply Power Distribution Lighting Voice and Data CCTV Fire Alarm System Back-ground Music

**BANK AL-HABIB**

Project	Shahrah-e-Faisal Branch
Location	Shahrah-e-Faisal, Karachi
Owners	Bank Al-Habib
Architect	Arshad Shahid Abdulla
Built-up Area	9,500 Sft
ElekEn's Services	Stand-by Power Supply Power Distribution Lighting System Voice & Data Communication CCTV System Fire Alarm System Background Music System

**ALLIED BANK**

Project	Main Branch, Allied Bank
Location	I.I Chundrigar Road Karachi
Owners	ABL
Architect	Golden Section
Status	Completed
ElekEn's Services	Stand-by Power Supply Power Distribution Lighting System Voice & Data Communication CCTV System Fire Alarm System

**STANDARD CHARTERED BANK**

Project	Main Branch, SCB
Location	Karachi, Pakistan
Owners	Standard Chartered Bank
Architect	Golden Section
Status	Completed
Built-up Area	9,500 Sft
ElekEn's Services	Stand-by Power Supply Power Distribution & Lighting Voice & Data Communication CCTV & Fire Alarm System HVAC & Plumbing System Back-ground Music System

**STANDARD CHARTERED BANK**

Project	Branch, SCB
Location	Islamabad, Pakistan
Owners	Standard Chartered Bank
Architect	Arshad Shahid Abdulla
Status	Completed
Built-up Area	4,000 Sft
ElekEn's Services	Stand-by Power Supply Power Distribution Lighting System Voice & Data Communication CCTV System Fire Alarm System

**AMERICAN LIFE INSURANCE CO.**

Project	Head Office of American Life Insurance
Location	15 <sup>th</sup> & 16 <sup>th</sup> Floor, Faysal House , Pakistan
Owners	American Life Insurance
Architect	TAQ Associates
Status	Completed
Built-up Area	18,000 Sft
ElekEn's Services	Power Distribution Lighting System Voice & Data Communication CCTV System Fire Alarm System

**OFFICE OF MR. JAHANGIR SIDDIQUI**

Project	Office for JS Group
Location	Faysal House, Karachi
Architect	Deluxe Interior
Status	Completed
Built-up Area	11,333 Sft
ElekEn's Services	Stand-by Power Supply Power Distribution & Lighting Voice & Data Communication CCTV & Fire Alarm System HVAC & Plumbing System Back-ground Music System

**BANK BRANCH OFFICES:**

- **Muslim Commercial Bank**  
More than 15 Branches designed by different architects.
- **Samba Bank**  
More than 10 Branches completed in 2008
- **Habib Bank Limited**  
More than 50 Branches including main branch at Habib Bank Plaza, completed in 2009
- **Khyber Bank**  
8 branches all over the country
- **Faysal Bank**  
3 branch offices in Karachi
- **NIB Bank**  
More than 25 Branches designed by different architects.

MIXED-USE

## WORLD TRADE CENTER



Project	World Trade Center
Location	Islamabad, Pakistan
Owners	Al-Ghurair GIGA Pakistan
Principal Architect	Hijas Kasturi Associates, Malaysia (Mall + Office Towers) Nihon Sikkie, Japan (Hotel)
Local Main architect	Abdul Razzak Associates
Status	Under construction
Built-up Area	5,000,000 Sft

### Project Brief:

- This is a two folds project, one 7 Star Hotel and other consist of Mall, Hyper Market and 5 Office Towers.
- It has 4B+G+3+4 Parking + 1 Recreation floor and 5 typical office towers with 32 stories building.
- Designed Electrical Load 29 MW
- Maximum Demand 23 MW

### District Energy System:

- The proposed power supply and air-conditioning system is based on District Energy System. Power and chilled water shall be supplied from one centralized location up to end user.
- The District Energy System based on co-generation / CHP, to utilize waste heat energy to achieve maximum efficiency i.e lesser energy cost.

### Scope of ElekEn's Services:

Electrical and Allied Engineering Services

- Design Concept
- Design Development
- BOQ and Specifications
- Coordination with local Vendors
- Preliminary Cost of Works
- Top Supervision

### Low Voltage Systems:

- Emergency Lighting System
- 11 KV Distribution
- Lightning Protection
- LV Power Distribution
- Lighting Systems
- Lighting Protection System

### Low Current System:

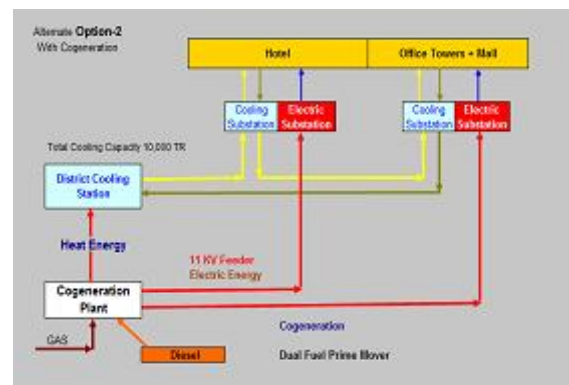
- Earthing System
- Fire Alarm System
- CCTV System and CATV
- Telephone and AV Intercom System
- Access Control
- Parking Management System

### Consultants for District Energy System:

M/s. Ainul Abedin Consulting Engineers

M/s. **ElekEn** Associates

M/s. SEM Engineers



## DEANS TRADE CENTER



Project	Deans Trade Center
Location	Peshawar, Pakistan
Owners	Shahid Gul & Partners
Architect	Gandhara Consultants
Status	Completed
Built-up Area	1,800,000 Sft

### Project Brief:

The project has 1B+LG+G+3 floors with total built-up area about **1,800,000 Sft**.

Basement has approximate **800** car parking capacity.

Centrally air-conditioned four levels are reserved for retail shops / show rooms, last floor has about 550 offices and roof top has Power House and 2 grand multi-purpose halls.

### Utility Power:

The project was initially designed for prime power through own CHP (Combined Heat and Power) generation but later on, on availability of power from PESCO, own generation was confined to stand-by power only.

Total connected load of Project is about **17 MW** and Maximum Demand is **11 MW** on 100% occupancy.

### Scope of ElekEn's Services

Electrical and Allied Engineering Services

#### Low Voltage Systems

- Lightning Protection
- Stand-by Power generation
- Power Distribution
- Lighting Systems and Control
- Emergency Lighting

#### Low Current System

- Parking Guidance System (to be commissioned)
- Voice and Data communication
- CCTV for surveillance
- Fire Alarm
- IBMS (Integrated Building Management System)

### Salient Features

- **Parking Guidance** System for vehicle parking from entrance to parking space to reach nearest vacant parking space by using digital, sensors, indicators and control panel designed with 4 wires system. (Wiring and accessories has been installed without equipment, system will be commissioned as per client's convenience)
- **Centralized, programmable, Lighting Control** system.
- **Pre-payment** energy meter, for each consumer.
- Power distribution through rising main system.
- State of the art Power Distribution and Load Shedding facility.
- BMS for HVAC and Motor Control Centre with VFD





**LUCKY ONE**

Project	Lucky One
Location	Karachi, Pakistan
Owners	Fazal Textiles
Architect	ARCOP Pvt. Ltd
Status	Design Development Phase
Built-up Area	5.9 Million Sft

**Project Brief:**

Lucky One consists of 8 towers i.e. 2 Tower-A and Tower-B which are un-identical and comprises of 28 floors with 6 basement levels for car parking each. Tower's consists of apartments and retail areas with 1 level of podium comprising of activities such as Cineplex, open night cricket field, long tennis etc.

**Utility Power:**

Prime power shall be procured from Self Co-Generation Power Plant situated nearby the complex and distributed through MV network.

Rising main Bus way System for Power Distribution

Connected Load                      34 MW

Demand Load                            23 MW

**Scope of ElekEn's Services**

Electrical and Allied Engineering Services includes, Design Development, Tender Documentation and Top Supervision

- Design Concept
- Design Development
- BOQ and Specifications
- Coordination with local Vendors
- Engineering Estimate

**Low Voltage Systems**

- Sub-station Equipment
- Lightning Protection
- Stand-by Power generation
- Power Distribution
- Lighting Systems and Control
- Emergency Lighting

**Low Current System**

- Telephone & Intercom System
- Fire Alarm System
- Access Control & CCTV System
- MATV System
- Energy Management System
- Parking Management & Guidance System

**BUILDING CENTER**



Project	Building Center
Location	Karachi, Pakistan
Architect	Arshad Shahid Abdullah
Status	Construction in Progress
Built-up Area	142,980 Sft

**Project Brief:**

Commercial project consist (2B+G+32 Typical Office floors) Basement (parking) + Ground + Mezzanine Floor (showroom) + 2<sup>nd</sup>,3<sup>rd</sup> floor (Offices)

**Utility Power:**

Prime power shall be procured from electric company on bulk-supply basis and will be distributed to each consumer through Pre-paid energy meters. Power shall be distributed through power cable up to each floor.100% back-up power shall be available by means of Diesel generators.

**Scope of ElekEn’s Services**

**Low Voltage Systems**

- Lightning Protection
- LV Power Distribution
- Lighting Systems and Control
- Emergency Lighting
- Earthing System
- Co-Generation System

**Low Current System**

- Fire Alarm Detection & Monitoring System
- CCTV System and CATV System
- Telephone and AV Intercom System
- Access Control System

**PARK & RIDE**



Project	Park & Ride Parking Plaza
Location	Lahore, Pakistan
Architect	Al Imam Enterprise
Status	In Design Development Phase
Built-up Area	648,800 Sft

**Project Brief:**

This is a Commercial project consist of 20 floors (B+G+32 Typical Office floors) 3B (parking) + LG & GR (mall) + 2<sup>nd</sup> to 9<sup>th</sup> (parking) + 10<sup>th</sup> to 20<sup>th</sup> Offices floors + auditorium.

**Utility Power:**

Prime power shall be procured from electric company on bulk-supply basis and will be distributed to each consumer through Pre-paid energy meters. Power shall be distributed through Bus ways up to each floor. 100% back-up power shall be available by means of Diesel generators.

**Scope of ElekEn’s Services**

**Low Voltage Systems**

- Lightning Protection
- LV Power Distribution
- Lighting Systems and Control
- Emergency Lighting
- Earthing

**Low Current System**

- Fire Alarm System
- CCTV System and CATV
- Telephone and AV Intercom System
- Access Control System
- MATV System & Parking Management System



**KASB ALTITUDE**

Project	KASB Altitude
Location	Clifton, Karachi
Owners	KASB Developers
Architect	KASB Developers
Status	Construction in Progress
Built-up Area	175,000 Sft

**Project Brief:**

This is a Commercial project consist of 32 floors (2B+G+32 Typical Office floors)

**Utility Power:**

Prime power shall be procured from electric company on bulk-supply basis and will be distributed to each consumer through Pre-paid energy meters. Power shall be distributed through Bus ways up to each floor. 100% back-up power shall be available by means of Diesel generators.

**Scope of ElekEn's Services:****Low Voltage Systems:**

- Lightning Protection
- LV Power Distribution
- Lighting Systems and Control
- Emergency Lighting
- Earthing System

**Low Current System:**

- Fire Alarm & Access Control System
- CCTV System and CATV
- Telephone and AV Intercom System

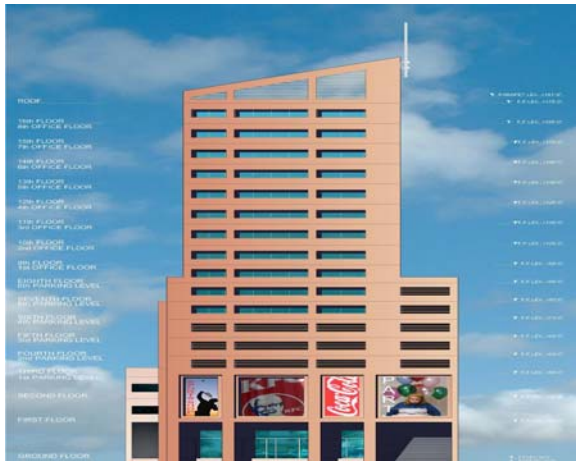
**GOLD CREST BIZMARK**

Project	DHA Lahore, Sector U
Location	Lahore, Pakistan
Architect	Abdul Razzak Associates
Status	Construction in Progress
Built-up Area	315,550 Sft
ElekEn's Services	Cogeneration Power Distribution Lighting, Voice & Data Fire Alarm & CCTV System Back-ground Music

**GOLD CREST SOUQ**

Project	DHA Lahore, Sector DD
Location	Lahore, Pakistan
Architect	Abdul Razzak Associates
Status	Construction in Progress
Built-up Area	1,192,590 Sft
ElekEn's Services	Stand-by Power Supply Power Distribution Lighting, Voice & Data Fire Alarm & CCTV System

**CITY VIEW BUILDING-1**



Project	City View Building-1
Location	Shaheed-e-Millat, Karachi
Architect	Parc International
Status	Completed
ElekEn's Services	Stand-by Power Supply Power Distribution Internal and External Lighting. Fire Alarm & CCTV System Voice and Data

**CITY VIEW BUILDING-2**



Project	City View Building-2
Location	Shahrah-e-Faisal, Karachi
Architect	Parc International
Status	Completed
ElekEn's Services	Stand-by Power Supply Power Distribution Internal and External Lighting. Fire Alarm & CCTV System Voice and Data

**SQUARE ONE MALL**



Project	B+G+3 for retail, Cinema, Food Court, Children Play Area, Mosque and Parking
Location	Karachi, Pakistan
Architect	ARCH Vision
Status	80% construction completed
Built-up Area	430,000 Sft
ElekEn's Services	Stand-by Power Supply Power Distribution Internal and External Lighting. Fire Alarm & CCTV System Communication System

**SAIMA MALL & RESIDENCY**



Project	B+G+3 for retail, Cinema, Food Court, Children Play Area, Mosque and Parking & 4 No. 12 Floors Residential Towers
Location	Karachi, Pakistan
Architect	Abdul Razzak Associates
Status	Completed
Built-up Area	800,000 Sft
ElekEn's Services	Stand-by Power Supply Power Distribution Internal and External Lighting. Fire Alarm & CCTV System Communication System

**EMERALD TOWER**



Project	B+G+2 for retail 4 Parking Parking Floors 11 Office Floors
Location	Karachi, Pakistan
Architect	ARCH Vision
Built-up Area	333,000 Sft
Status	80% construction completed
ElekEn's Services	Stand-by Power Supply Power Distribution Internal and External Lighting. Fire Alarm & CCTV System Voice and Data

**CUPOLA**



Project	A mixed use building having H/O of Cupola and retail outlets of various International Chain.
Location	Clifton, Karachi
Architect	ARCOP Pvt. Ltd
Built-up Area	53,000 Sft
Status	Completed
ElekEn's Services	Stand-by Power Supply Power Distribution Internal and External Lighting. CCTV Fire Alarm System Voice and Data

RESIDENTIAL



## EMAAR CRESCENT BAY PLOT 4



Project	Crescent Bay Plot - 4
Location	DHA, Karachi
Owners	Emaar GIGA Pakistan
Principal Architect	Issac Mazen LLC, USA
Local Main architect	Ahed Associates
Status	Under construction
Built-up Area	800,000 Sft

**Project Brief:**

This is a residential project consist of 23 and 25 floors two towers with Town Houses at ground floor, typical apartment floors and pent houses on top.

**Utility Power:**

Prime power shall be procured from electric company on bulk-supply basis and will be distributed to each consumer through Pre-paid energy meters. Power shall be distributed through Bus ways up to each floor. 100% back-up power shall be available by means of Diesel generators.

**Scope of ElekEn's Services****Low Voltage Systems**

- Lightning Protection
- LV Power Distribution
- Lighting Control Systems
- Emergency Lighting

**Low Current System**

- Fire Alarm & Access Control System
- CCTV System and CATV
- Telephone and AV Intercom System

## EMAAR CRESCENT BAY PLOT 5



Project	Crescent Bay Plot - 5
Location	DHA, Karachi
Owners	Emaar GIGA Pakistan
Principal Architect	dwp
Local Main architect	Abdul Razzak Associates
Status	Under construction
Built-up Area	700,000 Sft

**Project Brief:**

This is a residential project consist of 21 and 23 floors two towers with Town Houses at ground floor, typical apartment floors and pent houses on top.

**Utility Power:**

Prime power shall be procured from electric company on bulk-supply basis and will be distributed to each consumer through Pre-paid energy meters. Power shall be distributed through Bus ways up to each floor. 100% back-up power shall be available by means of Diesel generators.

**Scope of ElekEn's Services****Low Voltage Systems**

- Lightning Protection
- LV Power Distribution
- Lighting Systems and Control
- Emergency Lighting

**Low Current System**

- Fire Alarm & Access Control System
- CCTV System and CATV
- Telephone and AV Intercom System

**GOLD LINE RESIDENCY**

Project	Gold Line Residency
Location	Karachi, Pakistan
Owners	Harmain Builders
Architect	ARCH Vision
Status	Under construction
Built-up Area	584,643 Sft

**Project Brief:**

This is a residential project consist of 12 floors one tower with 2 - Basement parking at ground floor, shopping & parking & first floor to top typical apartments.

**Utility Power:**

Prime power shall be procured from electric company on bulk-supply basis and will be distributed to each consumer through KESC energy meters. Power shall be distributed through cable tray up to each floor. 50% back-up power shall be available by means of Diesel generators.

**Scope of ElekEn's Services**

Electrical and Allied Engineering Services up to 100% DD.

**Low Voltage Systems**

- Grounding & Lightning Protection
- LV Power Distribution
- Lighting Systems and Control
- Emergency Lighting
- Energy Meters

**Low Current System**

- Fire Alarm & Public Address System
- CCTV System and CATV
- Telephone and AV Intercom System

**KASB SKYVIEW**

Project	KASB Skyview Apartments
Location	Karachi, Pakistan
Owners	KASB Builders
Architect	KASB Builders
Status	Under construction
Built-up Area	1,600,000 Sft

**Project Brief:**

This is a stunning residential project of 6 towers having 22 floors each, with complete privacy and sense of security, and modern day technologies.

**Salient Features:**

- Car parking for each Apartment
- 24 hours Power Supply with stand-by generator
- Elaborate Security system/CCTV Cameras

**Scope of ElekEn's Services**

Electrical and Allied Engineering Services up to 100% DD.

**Low Voltage Systems**

- Illumination and Utility Power Supply
- Power Distribution Systems
- Main & Sub Main Cabling
- Earthing
- Stand-By Power Generators

**Low Current System**

- Fire Alarm & CCTV System
- AV Intercom System
- Security System
- Central TV System
- Voice & Data Communication
- Grounding & Lightening Protection

**EMAAR MEDITERANEAN VILLAS**

Project	500 Villas Emaar Mediterranean
Location	Islamabad, Pakistan
Owners	Emaar GIGA Pakistan
Architect	Mazen N. Issa, USA.
Status	Completed

**Scope of ElekEn's Services**

Electrical and Allied Engineering Services includes, Design Development, Tender Documentation.

**Low Voltage Systems**

- Illumination and Utility Power Supply
- Power Distribution System
- Wiring for Low Current System
- Sub-Station Equipment
- Stand-By Power Generators

**Low Current System**

- Fire Alarm System
- CCTV System
- Telephone, Intercom System
- Voice & Data Communication

**SUM SUM TOWER**

Project	Sum Sum Tower
Location	Gulshan-e-Maymar, Karachi
Owners	Sum Sum Builders
Architect	Sum Sum Builders
Status	90% construction completed

**Scope of ElekEn's Services**

Electrical and Allied Engineering Services includes, Design Development, Tender Documentation and Top Supervision.

**Low Voltage Systems**

- Illumination and Utility Power Supply
- Power Distribution System
- Wiring for Low Current System
- Sub-Station Equipment
- Stand-By Power Generators

**Low Current System**

- Fire Alarm System
- CCTV System
- Telephone, Intercom System
- Voice & Data Communication



**BURJ-UL-HARMAIN**



Project	Burj ul Harmain Apartments
Location	Karachi, Pakistan
Owners	Harmain Builders
Architect	Harmain Builders
Built-up Area	1,300,000 Sft
Status	80% Completed

**Scope of ElekEn's Services**

Electrical and Allied Engineering Services includes, Design Development, Tender Documentation and Top Supervision.

**Low Voltage Systems**

- Illumination and Utility Power Supply
- Power Distribution System
- Wiring for Low Current System
- Sub-Station Equipment
- Stand-By Power Generators

**Low Current System**

- Fire Alarm System
- CCTV System
- Telephone, Intercom System

**AVIATION ENCLAVE**



Project	Aviation Enclave
Location	Karachi, Pakistan
Owners	Central Builders & Developers
Architect	ARCH Vision
Status	Design Stage
Built-up Area	87.85 Acres

**Scope of ElekEn's Services**

Electrical and Allied Engineering Services includes, Design Development, Tender Documentation and Top Supervision.

- MV (11KV) Distribution Network
- Grounding Network
- Stand-by Arrangement (If require)
- Telecommunication System
- LV(400 V) Distribution Network
- Security System
- Street Lighting



## KPT OFFICERS &amp; HOUSING SOCIETY



Project	KPT Officer & Housing Society
Location	Karachi, Pakistan
Owners	Karachi Port Trust
Architect	Yousuf Chosky Associates
Status	70% Completed

**Scope of ElekEn's Services**

Electrical and Allied Engineering Services includes, Design Development, Tender Documentation and Top Supervision.

**Low Voltage Systems**

- Illumination and Utility Power Supply
- Underground Power Distribution System up to KWHr Meters of Housing Units.
- Street Lighting and its Power Distribution System.
- Sub-Station Equipment
- Earthing & Grounding

**Low Current System**

- CCTV System
- Telephone, Intercom System
- PTCL Voice Communication System

## LAKHANI PRESIDENCY



Project	Lakhani Presidency
Location	Karachi, Pakistan
Owners	Lakhani Builders
Architect	Tanveer Ahmed Associates
Built-up Area	871,200 Sft
Status	80% Completed
ElekEn's Services	Stand-by Power Supply Power Distribution Lighting Voice and Data Fire Alarm & CCTV System

## EMAAR CRESCENT BAY PLOT 3 &amp; 10



Project	Emaar Crescent Bay Plot 3 & 10
Location	DHA, Karachi
Owners	Emaar GIGA Pakistan
Architect	UCG Malaysia
Built-up Area	871,200 Sft
Status	80% Completed
ElekEn's Services	Design Review and Design Coordination

**HARMAIN ROYAL RESIDENCY**

Project	Harmain Royal Residency
Location	Karachi, Pakistan
Owners	Harmain Builders
Architect	ARCH Vision
Built-up Area	900,000 Sft
Status	80% Completed
ElekEn's Services	Emergency Generators Power Distribution Internal and External Lighting. Fire Alarm System Stand-By Power Supply

**PEARL RESIDENCY**

Project	Pearl Residency 2 No. 14 Storied Towers
Location	Karachi, Pakistan
Architect	ARCH Vision
Built-up Area	900,000 Sft
Status	80% Completed
ElekEn's Services	Stand-by Power Supply Power Distribution Lighting System Voice and Data CCTV System

**BELLE VIEW APARTMENTS**

Project	Belle View Apartments 7 No. 8 Storied Towers
Location	Karachi, Pakistan
Architect	Shamim Associates
Built-up Area	820,960 Sft
Status	Completed
ElekEn's Services	Stand-by Power Supply Power Distribution Lighting System Voice and Data CCTV System Fire Alarm System HVAC System Plumbing System

RETAIL

**AL-FATAH SHOPPING MALL**

Project	Al Fatah Shopping Mall
Location	Lahore, Pakistan
Owners	Mr. Shaikh Irfan Iqbal
Architect	ARCOP Pvt. Ltd
Status	90% Completed
Built-up Area	230,000 Sft

**Project Brief**

The state of the art centrally air-conditioned Hyper Market / Mall has 3B+G+7 floors with built-up area about 230,000 sft. The project has 100% back-up power through Diesel Generators installed on the roof top of building.

- Total connected load is about 2.3 MW
- Estimated Cost of electrical work Rs. 130 million

**Salient Features**

**Parking Guidance** System for vehicle parking from entrance to parking space to reach nearest vacant parking space by using digital, sensors, indicators and control panel designed with 4 wires system.

**Centralized Lighting Control** using programmable relays connected through UTP cable,

Cost of central battery system for emergency lighting has been reduced substantially by making some logics using C-Bus System.

**Scope of ElekEn's Services**

Electrical and Allied Engineering Services: Design Concept, Design Development and Top Supervision.

**Low Voltage Systems**

- Lightning Protection
- Stand-by Power generation
- Power Distribution
- Lighting Systems and Control
- Emergency Lighting

**Low Current System**

- Parking Guidance System
- Voice, Data and Video Communication
- Fire Alarm System
- Public Address System
- IBMS (Integrated Building Management System)
- Emergency Lighting System

**JINNAH SHOPPING MALL**

Project	Jinnah Shopping Mall
Location	Quetta Cantt
Owners	Cantonment Board Quetta
Architect	ARCH Vision
Status	Tendering Stage
Built-up Area	155,000 Sft

**Project Brief**

This centrally air-conditioned Mall has B+LG+G+2. & has 100% back-up power through Diesel Generators installed on the roof top of building.

**Scope of ElekEn's Services:**

Design Concept, Design Development and Top Supervision.

**Low Voltage Systems:**

- Lightning Protection
- Stand-by Power generation
- Power Distribution
- Lighting & Power Systems and Control
- Emergency Lighting

**Low Current System:**

- Voice, Data and Communication.
- CCTV & MATV System
- Fire Alarm & Public Address System
- UPS System

**Salient Features:**

Centralized Lighting Control using programmable relays connected through UTP cable & Cost of central battery system for emergency lighting has been reduced substantially by making some logics using C-Bus System.

**IMTIAZ SUPER MARKET**

Project	Imtiaz Super Market
Location	North Nazimabad, Karachi
Owners	Mr. Umer Imtiaz
Architect	Mubarik Associates
Status	Completed
Built-up Area	22,444 Sft

**Scope of ElekEn's Services**

Electrical & Allied Engineering Services for Design Concept, Design Development and Top Supervision.

**Low Voltage Systems**

- Prime and Stand-by Power Supply
- LV Power Distribution
- Lighting Systems and Control
- Emergency Lighting

**Low Current System**

- Fire Alarm System
- CCTV System
- Telecommunication System
- Lighting C Bus System
- Background Music
- Security Intruder System
- Access Control System
- Vertical Transportation System



## CROCS CONCEPT SHOP



Project	Crocs Concept Shop At Dolmen Mall, Clifton
Location	Karachi, Pakistan
Owners	Team A Ventures (Pvt.) Ltd.
Architect	Axis Design
Status	Completed

**Scope of ElekEn's Services**

Electrical and Allied Engineering Services:

**Low Voltage Systems**

- Internal Illumination
- Raw & Conditioned Power Distribution
- Lighting Systems
- Emergency Lighting
- Exit Lighting
- UPS

**Low Current System**

- Fire Alarm & Detection System
- Theft Protection System
- CCTV System
- Voice & Data Communication

## MONSOON STORE



Project	Monsoon Store At Dolmen Mall, Clifton
Location	Karachi, Pakistan
Owners	Team A Ventures (Pvt.) Ltd.
Architect	Axis Design
Status	Completed

**Scope of ElekEn's Services**

Electrical and Allied Engineering Services:

**Low Voltage Systems**

- Internal Illumination
- Raw & Conditioned Power Distribution
- Lighting Systems
- Emergency Lighting
- Exit Lighting
- UPS

**Low Current System**

- Fire Alarm & Detection System
- Theft Protection System
- CCTV System
- Voice & Data Communication

## TIMBERLAND STORE



Project	Timberland Store At Dolmen Mall, Clifton
Location	Karachi, Pakistan
Owners	Team A Ventures (Pvt.) Ltd.
Architect	Axis Design
Status	Completed

**Scope of ElekEn's Services**

Electrical and Allied Engineering Services:

**Low Voltage Systems**

- Internal Illumination
- Raw & Conditioned Power Distribution
- Lighting Systems
- Emergency Lighting
- Exit Lighting
- UPS

**Low Current System**

- Fire Alarm & Detection System
- Theft Protection System
- CCTV System
- Voice & Data Communication

## TOWN CENTRE-EDEN VALUE HOMES



Project	Town Centre-Eden Value Homes
Location	Lahore, Pakistan
Owners	Eden Builders
Architect	H3 Architect
Status	In Progress
Built-up Area	27,000 Sft.

**Scope of ElekEn's Services**

MEP Consultancy Services

**Low Voltage Systems**

- Internal & External Power Distribution
- Distribution Panel
- Lighting Control Systems
- Internal & External Lighting
- Structured Cabling for Voice / T.V
- Earthing & Grounding System

**Low Current System**

- CCTV for Surveillance
- Fire Alarm & Detection System
- CATV System
- Voice & Data Communication

**HVAC**

- Air-conditioning System

**Plumbing Works**

## VINCY MALL &amp; RESIDENCY



Project	Vincy Mall & Residency
Location	Karachi, Pakistan
Owners	Saima Builders
Architect	ARCH Vision
Status	Under Construction
Built-up Area	432,800 Sft

**Project Brief:**

This is a Commercial project consist of 18 floors (LG+G+18 Typical Residential Apartments)

**Utility Power:**

Prime power shall be procured from electric company on bulk-supply basis and will be distributed to each consumer through KESC energy meters. Power shall be distributed through cable tray up to each floor. 50% back-up power shall be available by means of Diesel generators.

**Scope of ElekEn's Services****Low Voltage Systems**

- Grounding + Lighting Protection
- LV Power Distribution
- Lighting Systems and Control
- Emergency Lighting
- Earthing
- Sub-Station Layout

**Low Current System**

- Fire Alarm & CCTV System
- Telephone and AV Intercom System
- CATV System
- Voice & Data Communication

## SHOE PLANET



Project	Shoe Planet
Location	Tariq Road, Karachi
Architect	TAQ Associates
Status	Completed
Built-up Area	6,000 Sft

## LEVI'S STORE



Project	Levi's Store
Location	Karachi, Pakistan
Architect	S+N Design
Status	Completed
Built-up Area	3,000 Sft



### METRO CASH & CARRY (Karachi Outlet)



Project	Metro Cash & Carry
Location	Karachi, Pakistan
Owners	METRO
Architect	Consult-Tech International
Status	Completed
Built-up Area	110,000 Sft

#### Project Brief:

International Chain of stores with high design standards in all engineering disciplines.

- Plot Area 10 Acres
- Built-up area 110,000 Sft.  
(Typical for all outlets)
- 100% automation for all MEP and Low current systems by means of Integrated Building Management System.
- Designed Electrical Load 2000 KW
- Anticipated Max. Demand 1700 KW
- 100% back-up power through diesel operated generators.

#### Scope of ElekEn's Services

Electrical & Allied Engineering Services for Design Concept, Design Development and Top Supervision.

- Design Concept (excl. Internal Lighting)
- Design Development
- BOQ and Specifications
- Coordination with local Vendors
- Engineering Estimate

#### Low Voltage Systems:

- Sub-station Equipment
- Lightning Protection
- Stand-by Power generation
- Power Distribution
- Lighting Systems and Control
- Emergency Lighting

#### Low Current System:

- Voice, Data and Video Communication
- Fire Alarm
- Access Control
- IBMS (Integrated Building Management System) for all Low current systems as well as HVAC and LV Equipment.



### METRO CASH & CARRY (Lahore Outlet)



Project	Metro Cash & Carry
Location	Lahore, Pakistan
Owners	METRO
Architect	Consult-Tech International
Status	Completed
Built-up Area	110,000 Sft

#### Project Brief:

International Chain of stores with high design standards in all engineering disciplines.

- Plot Area 10 Acres
- Built-up area 110,000 Sft.  
(Typical for all outlets)
- 100% automation for all MEP and Low current systems by means of Integrated Building Management System.
- Designed Electrical Load 2000 KW
- Anticipated Max. Demand 1700 KW
- 100% back-up power through diesel operated generators.

#### Scope of ElekEn's Services

Electrical & Allied Engineering Services for Design Concept, Design Development and Top Supervision.

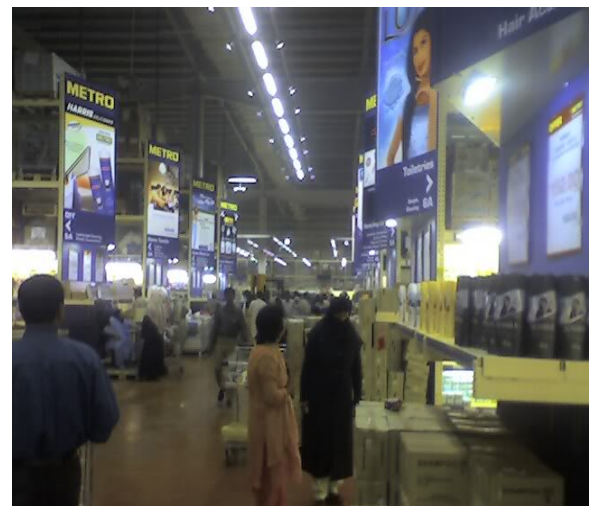
- Design Concept (excl. Internal Lighting)
- Design Development
- BOQ and Specifications
- Coordination with local Vendors
- Engineering Estimate

#### Low Voltage Systems:

- Sub-station Equipment
- Lightning Protection
- Stand-by Power generation
- Power Distribution
- Lighting Systems and Control
- Emergency Lighting

#### Low Current System:

- Voice, Data and Video Communication
- Fire Alarm
- Access Control
- IBMS (Integrated Building Management System) for all Low current systems as well as HVAC and LV Equipment.



### METRO CASH & CARRY (Islamabad Outlet)



Project	Metro Cash & Carry
Location	Outlet-1, Lahore
	Outlet-2, Islamabad
	Outlet-3, Karachi
Owners	METRO
Architect	Consult-Tech International
Status	Completed
Built-up Area	110,000 Sft

#### Project Brief:

International Chain of stores with high design standards in all engineering disciplines.

- Plot Area 10 Acres
- Built-up area 110,000 Sft.  
(Typical for all outlets)
- 100% automation for all MEP and Low current systems by means of Integrated Building Management System.
- Designed Electrical Load 2000 KW
- Anticipated Max. Demand 1700 KW
- 100% back-up power through diesel operated generators.

#### Scope of ElekEn's Services

Electrical & Allied Engineering Services for Design Concept, Design Development and Top Supervision.

- Design Concept (excl. Internal Lighting)
- Design Development
- BOQ and Specifications
- Coordination with local Vendors
- Engineering Estimate

#### Low Voltage Systems:

- Sub-station Equipment
- Lightning Protection
- Stand-by Power generation
- Power Distribution
- Lighting Systems and Control
- Emergency Lighting

#### Low Current System:

- Voice, Data and Video Communication
- Fire Alarm
- Access Control
- IBMS (Integrated Building Management System) for all Low current systems as well as HVAC and LV Equipment.



### NAHEED SUPER MARKET (Outlet-1)



Project	Naheed Super Market Outlet-1
Location	Karachi, Pakistan
Owners	Naheed Super Market
Architect	KAN KAN International
Status	Completed
Built-up Area	15,000 Sft (G+ 2 Levels)

#### Scope of ElekEn's Services:

Design Development and Top supervision of execution works:

#### Low Voltage Systems

- Stand-by Power Supply
- LV Power Distribution
- Lighting & Power Systems
- Emergency Lighting

#### Low Current System

- Door scanning
- Intelligent lighting control
- Voice & Data communication system
- Fire Alarm System
- CCTV System
- Telephone

### NAHEED SUPER MARKET (Outlet-2)



Project	Naheed Super Market Outlet-2
Location	Karachi, Pakistan
Owners	Naheed Super Market
Architect	S+N Design
Status	Completed
Built-up Area	30,000 Sft

#### Scope of ElekEn's Services:

Design Development and Top supervision of execution works:

#### Low Voltage Systems

- Stand-by Power Supply
- LV Power Distribution
- Lighting & Power Systems
- Emergency Lighting

#### Low Current System

- Door scanning
- Intelligent lighting control
- Voice & Data communication system
- Fire Alarm System
- CCTV System
- Telephone



**THREDZ**



Project	THREDZ
Location	Outlet-1, Bahadurabad Karachi
	Outlet-2, Gulshan Karachi
Owners	Thredz
Architect	TAQ Associates
Status	Completed
Built-up Area	5,000 Sft - Typical for all outlets

**SANAULLAH**



Project	Sanallah
Location	Tariq Road, Karachi
Owners	Mr. Sana
Architect	KAN KAN
Status	Completed
Built-up Area	18,000 Sft

**PANTALOONS**



Project	Pantaloon's
Location	Forum, Karachi
Owners	Pantaloon's
Architect	S + N Design
Status	Completed

**CITY CENTER**



Project	City Center B+G+5 Floors, Centrally Air-conditioned Shopping Mall
Location	Shahrah-e-Faisal, Karachi
Owners	Mr. Irfan
Architect	ARCH Vision
Status	Completed
Built-up Area	240,000 Sft

## LAVISH MALL



Project	Lavish Shopping Mall
Location	Tariq Road, Karachi
Architect	ARCH Vision
Interior	S + N Design
Status	Completed
Built-up Area	120,000 Sft

## DECENT FURNITURE



Project	Decent Furniture's
Location	DHA, Karachi
Architect	S + N Design
Status	Completed

## LAVISH MALL



Project	Lavish Shopping Mall
Location	Clifton, Karachi
Architect	ARCH Vision
Interior	S + N Design
Status	Completed

## PEN WORLD



Project	Pen World
Location	Forum, Karachi
Status	Completed



**SONY WORLD**

Project	Sony World
Location	Zamzama, Karachi
Status	Completed

**EBCO SUPER MARKET**

Project	EBCO Super Market
Status	Completed

**RADIO CITY**

Project	Radio City
Location	Forum, Karachi
Status	Completed

**GENERATION**

Project	Generation Boutique
Location	Zamzama, Karachi
Status	Completed

**WORLD AUTO MOBILES**

Project	Nissan Show Room
Location	Shahrah-e-Faisal, Karachi
Status	Completed



HEALTH

**REHMAN MEDICAL CENTER**

Project	Rehman Medical Center
Location	Peshawar, Pakistan
Owners	Dr. Abdul Rehman
Architect	Mass International
Status	Completed
Built-up Area	750,000 Sft

**Project Brief:**

2B +G+8 Floors Complex for Hospital and Medical College.

The project has complete hospital facilities including comprehensive pathological labs, OT(s), Pharmacy, Trauma Center, Patients Wards and Academic Spaces for College.

College and hospital buildings are functionally separated but interconnected with each other.

Keeping in view the architectural concept of the building, the MEP services are provided and distributed accordingly for the ease of operation and maintenance.

Prime power shall be procured from PESCO and 100% back-up power through DG sets.

**Utility Power:**

- Designed Electrical Load      **3.5 MW**
- Anticipated Max. Demand      **2.8 MW**

**Scope of ElekEn's Services**

Electrical and Allied Engineering Services includes, Design Development, Tender Documentation and Top Supervision.

**Low Voltage System:**

- Prime and Stand-by Power
- Lightning Protection
- Power Distribution
- Lighting Systems and Control
- Emergency Lighting

**Low Current System:**

- Voice, Data and Video Communication
- Nurse Call System
- Fire Alarm & Detection System
- IBMS (Integrated Building Management System)
- Access Control System

**Salient Features:**

- Centralized Lighting Control using Programmable DIN rail mounted relays.
- Low Current Systems Integration for CCTV, Access Control, Energy Management and Fire Alarm System etc.



**RAK DENTAL COLLEGE**

Project	RAK Dental College
Location	Ras ul Khaima, UAE
Architect	Consult-Tech International
Status	90% Construction Completed
Built-up Area	130,000 Sft

**Project Brief:**

1B + G + 7 Floors Complex for Hospital. The project has complete hospital facilities including comprehensive pathological labs, OT(s), Pharmacy, Trauma Center & Patients wards. Keeping in view the architectural concept of building, the MEP services are provided and distributed accordingly for the ease of operation and maintenance. 100% back-up power through DG sets.

**Scope of ElekEn's Services****Low Voltage Systems**

- Prime and Stand-by Power
- Lightning Protection
- Power Distribution
- Lighting Systems and Control
- Emergency Lighting

**Low Current System**

- Voice, Data and Video Communication
- Nurse Call System
- Fire Alarm & Access Control System
- IBMS (Integrated Building Management System)

**Salient Features**

- Centralized Lighting Control using Programmable DIN rail mounted relays & Low Current Systems Integration for CCTV, Access Control, load monitoring and Fire Alarm System etc.

**JPMC FISTULA WARD**

Project	Fistula Ward, JPMC
Location	JPMC Karachi
Architect	Sikandar Ajam Associates
Status	Completed
Built-up Area	35,000 Sft

**Scope of ElekEn's Services:**

Electrical and Allied Engineering Services includes, Design Development, Tender Documentation.

**Electrical Engineering****Low Voltage Systems**

- Lighting Systems and Control
- Sub-station Equipment
- Emergency Lighting
- Stand-by Power Supply
- Lightning Protection
- LV Power Distribution

**Low Current System**

- Fire Alarm System
- CCTV System and CATV
- Telephone & Data
- Nurse Call System

**MEHRUNNISA WELFARE TRUST**

Project	Mehrunnisa Welfare Trust
Location	Korangi Creek, Karachi
Architect	Alliance Consultants
Status	Completed
Built-up Area	110,000 Sft

**Project Details:**

- Connected Load 1.3 MW
- Maximum Demand 1.1 MW
- Stand-by Generators 1x750KVA, 1x500 KVA

**Scope of ElekEn's Services:**

Electrical and Allied Engineering Services includes, Design Development, Tender Documentation.

**Electrical Engineering****Low Voltage Systems**

- Sub-station Equipment
- Stand-by Power Supply
- Lightning Protection
- LV Power Distribution
- Lighting Systems and Control
- Emergency Lighting

**Low Current System**

- Fire Alarm System
- CCTV System
- Telephone
- Nurse Call System
- SMATV
- Paging

**YUSUF PATEL HOSPITAL**

Project	Yusuf Patel Hospital
Location	Gulshan-e-Iqbal, Karachi
Architect	Alliance Consultants
Status	Completed
Built-up Area	90,000 Sft

**Project Details:**

- Connected Load 1.6 MW
- Maximum Demand 1.2 MW
- Stand-by Generators 1x1000 KVA Gas Generator + KESC

**Scope of ElekEn's Services:**

Electrical and Allied Engineering Services includes, Design Development, Tender Documentation.

**Electrical Engineering****Low Voltage Systems**

- Prime and Stand-by Power Supply
- LV Power Distribution
- Lighting Systems and Control
- Emergency Lighting

**Low Current System**

- Nurse Call System
- Fire Alarm System
- CCTV System and SMATV
- Telephone
- Paging

**SHAMSI WELFARE HOSPITAL**

Project	Shamsi Welfare Trust
Location	Karachi, Pakistan
Owners	Shamsi Cooperative Society
Architect	Alliance Consultants
Status	Completed
Built-up Area	60,000 Sft

**Project Details:**

- Connected Load 1100 KW
- Maximum Demand 850 KW
- Stand-by Generators 100% Back-up

**Scope of ElekEn's Services:**

Electrical and Allied Engineering Services includes, Design Development, Tender Documentation & Top Supervision

**Electrical Engineering****Low Voltage Systems**

- Prime & Stand-by Power Supply
- LV Power Distribution
- Lighting Systems and Control
- Emergency Lighting

**Low Current System**

- Fire Alarm System
- CCTV System
- Telephone
- Nurse Call System
- SMATV
- Paging

**MAROOF HOSPITAL**

Project	Maroof Hospital
Location	Islamabad, Pakistan
Owners	Choudary Naseer
Architect	Abdul Razzak Associates
Status	Completed
Built-up Area	200,000 Sft

**Scope of ElekEn's Services:**

Electrical and Allied Engineering Services includes, Design Development, Tender Documentation & Top Supervision

**Electrical Engineering****Low Voltage Systems**

- Prime & Stand-by Power Supply
- LV Power Distribution
- Lighting Systems and Control
- Emergency Lighting

**Low Current System**

- Fire Alarm System
- CCTV System
- Telephone
- Nurse Call System
- SMATV
- Paging



## MEMON MEDICAL INSTITUTE



Project	Memon Medical Institute
Location	Karachi, Pakistan
Architect	Habib Fida Ali
Status	Completed
Built-up Area	300,000 sft
ElekEn's Services	Design Vetting Value Engineering Security Reports of LC System

## NATIONAL INSTITUTE OF CARDIO VASCULAR DISEASES



Project	New OPD - NICVD
Location	Karachi, Pakistan
Architect	Ahed Associates
Status	Completed
Built-up Area	9.000 sft
ElekEn's Services	Power Distribution Lighting Voice and Data CCTV Fire Alarm System

## MATERNITY &amp; HEALTH CARE CENTER

Project	Maternity & Health Care Center
Location	Karachi
Architect	Abdul Razzak Associates
Status	Construction Started
Built-up Area	8,000 sft.
ElekEn's Services	Design Development up to Construction Drawings for:  <b>Low Voltage Systems</b> <ul style="list-style-type: none"> <li>• LV Power Distribution</li> <li>• Internal Illumination</li> <li>• Conditioned Power for Electronic equipments</li> <li>• Stand-by Power Supply</li> <li>• Emergency Lighting</li> </ul> <b>Low Current System</b> <ul style="list-style-type: none"> <li>• Fire Alarm System</li> <li>• CCTV System &amp; CATV</li> <li>• Telephone &amp; Data Communication</li> <li>• Nurse Call System</li> </ul>

## GYNE WARD - JPMC

Project	Gyne. Ward, JPMC
Architect	Abdul Razzak Associates
Interior	ARA
Status	Completed
Built-up Area	10,000 Sft
ElekEn's Services	Stand-by Power Supply Power Distribution Lighting Voice and Data CCTV Fire Alarm System HVAC Plumbing

**NEUROSURGERY CENTER, JPMC**

Project	Neurosurgery Center, JPMC
Location	Karachi, Pakistan
Architect	Akbar Mehmood Kaizar
Status	Completed
Built-up Area	60,000 sft
ElekEn's Services	Stand-by Power Supply Power Distribution Lighting Voice and Data CCTV System Fire Alarm System

**AKU HEALTH CARE CENTER**

Project	AKU Health Care Center
Location	Peshawar, Pakistan
Architect	Spatial Concept
Interior	Spatial Concept
Status	Completed
Built-up Area	5,000 sft
ElekEn's Services	Stand-by Power Supply Power Distribution Lighting Voice and Data CCTV System Fire Alarm System

**Related Projects:**

- Akhter Eye Hospital Karachi.
- Nursing School Patel Hospital.
- Azmina Cancer Clinic.
- Eye Clinic Gawadar.
- Habib Medical Center.
- Karachi Institute of Surgical & Medical
- Kharadar Hospital Karachi.
- Family Health Care Hospital Badin.
- Karachi Medical & Dental College.



# EDUCATION

**AGA KHAN FACULTY OF ARTS & SCIENCES**

Project	Aga Khan Faculty of Arts & Sciences
Location	Karachi, Pakistan
Owners	Aga Khan
Principal Architect	Payette Associates, USA
Local Architect	Habib Fida Ali, ARCOP Pvt. Ltd
Status	Design Development Phase
Built-up Area	2 Million Sft

**Project Brief:**

It is a huge educational institute comprising student's as well as bachelor's hostels. It comprises of following building.

Campus Core, Academic Core, Library, Student's Center, Central Dining, Athletics, Students Housing, Faculty Housing, Central Plants, Cricket Fields etc.

Keeping in view the Green Building concept, the MEP services are provided and distributed accordingly for the ease of operation and maintenance.

**Scope of ElekEn's Services**

Preparation of Construction Design Development documents for the following:

**Electrical**

- Internal Illumination
- Emergency Egress Lighting
- Grounding & Bonding
- Facility Lightning Protection
- Uninterruptible Power Supply & Distribution
- Landscape Lighting
- Area Lighting
- Façade Lighting

**Communication**

- Voice & Data Structured Cabling
- Passive Data Networking Equipments
- Emergency Evacuation System
- Interactive Audio Video Projection
- CATV System
- Audio/Video Conferencing

**Electronic Safety & Security**

- Intelligent Fire Alarm & Detection
- Proximity Door Access Control
- CCTV Security Surveillance

**Salient Features**

- Intelligent DALI based Centralized Lighting Control System.
- Energy Conservation using Occupancy Sensors, LUX Level Sensors, Motion Detectors etc.
- Specialized lighting for Auditorium and Theaters.
- Dimming Control System for Stage Lighting.
- Wi-Fi Networking round the campus.
- Fire Stopping Seals.

**HABIB UNIVERISTY CITY CAMPUS**

Project	Habib University City Campus
Location	Karachi, Pakistan
Owners	Habib University Foundation
Architect	Ahed Associates
Status	Design Development Phase
Built-up Area	622,067 Sft

**Project Brief:**

This is an educational project comprising of classroom, auditorium, labs, lecture halls, admin office, cafeteria parking, garden etc.

**Scope of ElekEn's Services:**

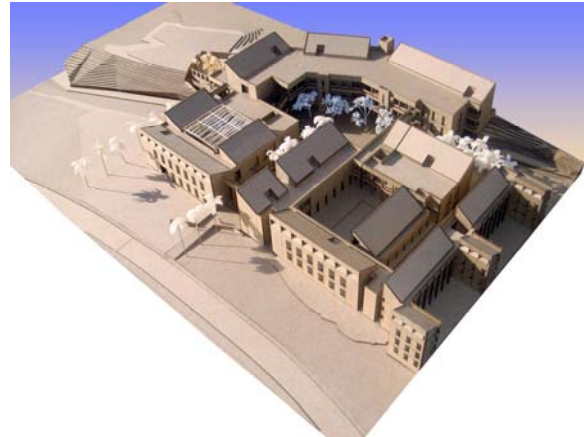
Electrical and Allied Engineering Services includes, Design Development, Tender Documentation and Top Supervision.

**Low Voltage Systems**

- Illumination and Utility Power System
- Sub-Station Equipment
- Power Distribution System
- Conditioned Power for IT Equipments
- Stand-By Power Distribution System
- Prime Power Supply System

**Low Current System**

- Telephone
- Data and Intercom System
- Fire Alarm & Detection System
- CCTV for Surveillance
- Public Address System
- Media Technology
- Intelligent Lighting Control System

**AKU - CIME**

Project	Center of Innovation for Medical Education - AKU
Location	Karachi, Pakistan
Owners	Agha Khan
Architect	Ebrahim & Chaudhary
Status	Design Development Phase
Built-up Area	84,000 Sft

**Project Brief:**

The vision of building is to improve acquisition of current and cutting edge skills and to develop and test new Techniques and new health related technology.

**Scope of ElekEn's Services:**

Electrical and Allied Engineering Services includes, Design Development, Tender Documentation and Top Supervision.

**Low Voltage Systems**

- Stand-by Power Supply
- Lightning System & Control
- Power Distribution System
- Lightning Protection System
- Earthing & Grounding System
- UPS (Uninterruptible Power Supply)

**Low Current System**

- Access Control System
- Voice & Data Communication
- Video Conferencing System
- RMU System
- Fire Alarm & Detection System
- CCTV System

**LIAQUAT NATIONAL MEDICAL COLLEGE**

Project	Liaquat National Medical College
Location	Karachi, Pakistan
Owners	Liaquat National Hospital
Architect	Ahed Associates
Status	Construction in Progress
Built-up Area	18,000 Sft

**Scope of ElekEn's Services:**

Electrical and Allied Engineering Services includes, Design Development, Tender Documentation and Top Supervision.

**Low Voltage Systems**

- LV Power Distribution
- Internal Illumination
- Conditioned Power for Electronic equipments
- Stand-by Power Supply
- Emergency Lighting

**Low Current System**

- Fire Alarm System
- CCTV System & CATV
- Telephone & Data Communication
- Nurse Call System

**V. M. PUBLIC SCHOOL**

Project	V. M. Public School
Location	Pakistan
Architect	Abdul Razzak Associates
Status	Completed
ElekEn's Services	Stand-by Power Supply Power Distribution Lighting Voice and Data CCTV Fire Alarm System

**AGA KHAN BOYS HOSTEL**

Project	AGA Khan Boys Hostel
Location	Chitraal, Pakistan
Architect	Dideor
Status	Completed
ElekEn's Services	Stand-by Power Supply Power Distribution Lighting Voice and Data CCTV Fire Alarm System

**RANGOONWALA TRUST BUILDING**

Project	Class Room & Library Building
Location	Karachi, Pakistan
Architect	Abdul Razzak Associates
Status	Completed
ElekEn's Services	Stand-by Power Supply Power Distribution Lighting Voice and Data CCTV Fire Alarm System

**SIR SHAHNAWAZ BHUTTO LIBRARY**

Project	Sir Shahnawaz Bhutto Library
Location	Larkana, Pakistan
Architect	A.C.E
Status	Completed
ElekEn's Services	Electrical & Allied Works

**BEACON HOUSE SCHOOL**

Project	Beacon House School
Location	Faisalabad, Pakistan
Architect	ARCOP Pvt. Ltd
Status	Completed
ElekEn's Services	Stand-by Power Supply Power Distribution Lighting Voice and Data CCTV Fire Alarm System

**BACHELORS HOSTEL**

Project	Bachelors Hostel
Location	Nooriabad, Karachi
Architect	Arshad Shahid Abdulla
Status	Completed
ElekEn's Services	Electrical & Allied Works



**SIND MUSEUM**

Project	Library & Auditorium
Location	Hyderabad, Pakistan
Architect	Abdul Razzak Associates
Status	Completed
ElekEn's Services	Electrical & Allied Works

**RANGOONWALA ART GALLERY**

Project	Rangoonwala Art Gallery
Location	Karachi, Pakistan
Architect	S+N Design
Status	Completed
ElekEn's Services	Electrical & Allied Works

**COLLEGE OF PHYSICIAN & SURGEON**

Project	College of Physician, (Extension & New Building)
Location	Pakistan
Architect	Pee Dee Associates
Status	Completed
ElekEn's Services	Electrical & Allied Works

**N.E.D UNIVERSITY OF ENGINEERING & TECHNOLOGY**

Project	Admin Block, Library and Post Graduate Block
Location	Karachi, Pakistan
Architect	A.C.E
Status	Completed
ElekEn's Services	Electrical & Allied Works



**SHAMSI CO-OPERATIVE SCHOOL**

Project	Shamsi Co-Operative School, Auditorium
Location	Karachi, Pakistan
Architect	Alliance Consultant
Status	Completed
ElekEn's Services	Electrical & Allied Works

**LIBRARY - STATE BANK OF PAKISTAN**

Project	Library & Auditorium, SBP
Location	Karachi, Pakistan
Architect	Naqvi & Siddiqui
Status	Completed
ElekEn's Services	Electrical & Allied Works

**AGA KHAN IED BUILDING**

Project	IED Office, Phase II
Location	Karimabad, Karachi
Architect	Arshad Shahid Abdulla
Status	Completed
ElekEn's Services	Electrical & Allied Works

**HAMDARD BOYS SCHOOL**

Project	Hamdard Boys School
Location	Bund Murad, Pakistan
Architect	Naqvi & Siddiqui
Status	Completed
ElekEn's Services	Electrical & Allied Works

1. **Jamia Aisha Siddiqui**  
Gulistan-e-Johar, Karachi  
Arch: RizKi & Co
2. **Karachi Medical & Dental College**  
North Karachi  
Built-up Area: 210,000 sft  
Arch: A.C.E
3. **Al-Furqan Orphanage Scheme, Bund Murad, Karachi**  
Plot Area = **26** acres  
Project consist of:
  - Hostels,
  - Gymnasium,
  - Auditorium
  - Mosque,
  - Dining Hall, Kitchen,
  - Sports Ground,
  - Swimming Pool etc.
 Arch: A.C.E
4. **Jamia Benoria (Extension)**  
S.I.T.E Karachi  
Arch: A.R.A
5. **Dhoraji School Karachi**  
Arch: A.R.A
6. **Darul Uloom Karachi**  
Arch: Naqvi and Siddiqui
7. **Dehli School, Karachi**  
Arch: Naqvi and Siddiqui
8. **KMA School, Kharadar**  
Covered area: 36000 Sft.
9. **Lyari Model School**  
Karachi.  
Arch: Tariq A Qaiser
10. **BCCI FAST ACADEMY BUILDING**  
Karachi.  
Arch: A.C.E  
Built-up Area: 50,000 sft

INDUSTRIAL

**KARACHI EXPORT PROCESSING ZONE  
PHASE – II**

Project	External MV / LV Power Distribution Network. From grid Station to 7 No. 2000 KVA Substation
Location	Karachi, Pakistan
Owners	KEPZ
Architect	Naqvi & Siddiqui
Status	Completed
Built-up Area	94 Acres
Electrical Load	8.5 MW
ElekEn's Services	Power Distribution External Area Lighting

**SUBMARINE RE-BUILD COMPLEX**

Project	19 No. Work-Shops, Admin Building , MDS and Ship Lift Area  Power distribution from MDS to 7 No. Sub-stations with load shedding facility during ship lifting process.
Location	Ormara, Baluchistan
Owners	Pakistan Navy
Architect	SWK-UK, A.C.E
Status	100% completed and energized
Area	12 Acres
Electrical Load	7.5 MW
ElekEn's services	Internal and External MV and LV and LC System

**TOYOTA INDUS MOTORS**

Project	Press Shop & Weld Shop
Location	Karachi, Pakistan
Owners	Indus Motors
Architect	Mushtaq & Bilal
Status	Completed
Built-up Area	75,000 Sft
Electrical Load	8.5 MW
ElekEn's Services	Stand-by Power Supply Power Distribution Lighting Voice and Data

**SARA CORPORATION**

Project	Dyeing & Printing
Location	Karachi, Pakistan
Owners	Sara Group
Architect	EDS
Status	Completed
Built-up Area	180,000 Sft
ElekEn's Services	Stand-by Power Supply Power Distribution Lighting Voice and Data Fire Alarm System

**SARA CORPORATION**

Project	Stitching Units
Location	Karachi, Pakistan
Owners	Sara Group
Architect	EDS
Status	Completed
Built-up Area	160,000 Sft
ElekEn's Services	Stand-by Power Supply Power Distribution Lighting Voice and Data Fire Alarm System

**SARA CORPORATION**

Project	Mill # 3
Location	Karachi, Pakistan
Owners	Sara Group
Architect	EDS
Status	Completed
Built-up Area	200,000 Sft
ElekEn's Services	Stand-by Power Supply Power Distribution Lighting Voice and Data

**PAN INDUSTRIES**

Project	PAN Industries
Location	Karachi, Pakistan
Architect	Naqvi & Siddiqui
Status	Completed
ElekEn's Services	Stand-by Power Supply Power Distribution Lighting Voice and Data

**AL-ABID EXPORTS**

Project	Al-Abid Exports
Location	S.I.T.E Karachi
Architect	ARCOP Pvt. Ltd.
Built-up Area	300,000 Sft
Status	Completed
ElekEn's Services	Stand-by Power Supply Power Distribution Lighting Voice and Data CCTV Fire Alarm System HVAC Plumbing

**AL-ABID SILK MILLS # 4**

Project	Al-Abid Silk Mills # 4
Location	Karachi, Pakistan
Architect	ARCOP Pvt. Ltd.
Built-up Area	85,000 Sft
Status	Completed
ElekEn's Services	Stand-by Power Supply Power Distribution Lighting Voice and Data

**DAEWOO - TATA (AFZAL MOTORS)**

Project	Afzal Motors
Location	Karachi, Pakistan
Architect	Consult-Tech International
Status	Completed
ElekEn's Services	Stand-by Power Supply Power Distribution Lighting Voice & Data Communication Fire Alarm System

**CHAWLA RICE MILL**

Project	Chawla Rice Mill
Location	Jacobabad, Pakistan
Architect	Pee Dee Associates
Built-up Area	300,000 Sft
Status	Completed
ElekEn's Services	Stand-by Power Supply Power Distribution Lighting Voice and Data CCTV Fire Alarm System HVAC Plumbing

**Related Projects. . . .**

- MI Apparel Garment Factory, Karachi.
- BASF Factory, Karachi.
- Tower Factory, Karachi.
- Bilal Omer Textile Karachi.
- Continental Biscuits ( Extension ).
- International Laboratories.
- Faiz Enterprises.
- Port Qasim Jetty.
- Overseas Oil Trading Corporation.

# INFRASTRUCTURE



**KARACHI EXPORT PROCESSING ZONE  
PHASE – II**

Project	External MV / LV Power Distribution Network. From grid Station to 7 No. 2000 KVA Substation
Location	Karachi, Pakistan
Owners	KEPZ
Architect	Naqvi & Siddiqui
Status	Completed
Built-up Area	94 Acres
Electrical Load	8.5 MW
ElekEn's Services	Power Distribution External Area Lighting

**SUBMARINE RE-BUILD COMPLEX**

Project	19 No. Work-Shops, Admin Building , MDS and Ship Lift Area  Power distribution from MDS to 7 No. Sub-stations with load shedding facility during ship lifting process.
Location	Ormara, Baluchistan
Owners	Pakistan Navy
Architect	SWK-UK, A.C.E
Status	100% completed and energized
Area	12 Acres
Electrical Load	7.5 MW
ElekEn's services	Internal and External MV and LV and LC System

**TOYOTA INDUS MOTORS**

Project	Press Shop & Weld Shop
Location	Karachi, Pakistan
Owners	Indus Motors
Architect	Mushtaq & Bilal
Status	Completed
Built-up Area	75,000 Sft
Electrical Load	8.5 MW
ElekEn's Services	Up-gradation of 11 KV Network

**AL-FURQAN ORPHANAGE SCHEME**

Project	Providing Complete Electrical Infrastructure facilities for Hostels, Gymnasiums, Sports Grounds, Mosque Buildings etc.
Location	Karachi, Pakistan
Owners	Al-Furqan Group
Architect	A.C.E
Status	Completed
Built-up Area	26 Acres
ElekEn's Services	Stand-by Power Supply Power Distribution Lighting Voice and Data Fire Alarm System

HOSPITALITY

**MARGALA HOTEL**



Project	Margala Hotel
Location	Islamabad, Pakistan
Architect	Najmi Bilgrami Collaboration
Status	Construction Started
Built-up Area	100,000 Sft
ElekEn's Services	Stand-by Power Supply Power Distribution Lighting Voice and Data CCTV Fire Alarm System Interactive TV System

**PORT GRAND**



Project	Port Grand
Location	Karachi, Pakistan
Architect	Grand Lesuire Corp. USA
Status	Completed
Built-up Area	150,000 Sft
ElekEn's Services	Stand-by Power Supply Power Distribution Lighting Voice and Data CCTV Fire Alarm System

**COASTA COFFEE**



Project	Coasta Coffee
Location	Karachi, Pakistan
Architect	ARCOP Pvt. Ltd
Status	Completed
ElekEn's Services	Stand-by Power Supply Power Distribution & Lighting Voice & Data Communication Fire Alarm & CCTV System



**CREEK CLUB**



Project	Creek Club
Location	Karachi, Pakistan
Architect	Fareed Associates
Status	Construction in progress
ElekEn's Services	Stand-by Power Supply Power Distribution Lighting Voice and Data CCTV Fire Alarm System

**CREEK LODGE**



Project	Creek Lodge
Location	Karachi, Pakistan
Architect	Fareed Associates
Status	90% Completed
ElekEn's Services	Stand-by Power Supply Power Distribution Lighting Voice and Data CCTV Fire Alarm System

**NANDOS RESTAURANT**



Project	Nandos Restaurant
Location	Clifton, Karachi
Architect	ARCOP Pvt. Ltd
Status	Completed
ElekEn's Services	Stand-by Power Supply Lighting Voice & Data Communication Fire Alarm & CCTV System

**McDONALDS RESTAURANT**



Project	McDonalds Restaurant
Location	Ali Tower, Lahore
Architect	Ahed Associates
Status	Project Completed
ElekEn's Services	Stand-by Power Supply Lighting Voice & Data Communication Fire Alarm & CCTV System

**Related Projects . . .**

- Pizza Hut Hyderabad.
- TGI Fridays, Karachi.
- Sangam Hotel, Islamabad.
- Margala Hotel, Muree.
- Pizza Express, Karachi.
- KFC Lahore, Karachi.
- Clifton Restaurant Karachi.
- Deli Shop Zamzama.
- McDonalds Restaurant Lahore, Sialkot.

MISC



**GHARO CREEK**

Project	Training Center SSG-N
Location	Gharo, Pakistan
Owners	Pakistan Navy
Architect	Ahed Associates
Status	Construction in Progress
Built-up Area	500 Acres

**Project Brief**

Gharo Creek – Comprising of 500 Acres plot area both for Training Fields and Accommodation for approx. 500 families.

**Utility Power**

- Designed Electrical Load                      7 MW
- Anticipated Max. Demand                      5 MW
- Generation Capacity                              4.5 MW
- Prime Power through MV Feeders from WAPDA and stand-by power through MV diesel operated generators.

**Scope of ElekEn's Services**

Infra structure for Electrical and Allied Engineering Services

**Power Supply Systems**

- MV Power Distribution System
- Sub-Station Equipments
- Stand-By Power Generation.
- Street Lighting & Control
- Control Automation
- Security Lighting.

**Low Current System**

- Voice Communication
- CATV System

**Salient Features**

- **Centralized, Lighting Control** using programmable Relays.
- Step Dimming System for energy conservation.
- Control Automation for power monitoring and control.
- Ring Main System for redundant power network

**FRONTIER CORPS TRAINING CENTER  
KHYBER PAKHTOONKHUAW (FS)**



Project	Training Center SSG-N
Location	Timergara, Peshawar
Owners	Pakistan Navy
Architect	Ahed Associates
Status	Construction in Progress
Built-up Area	500 Acres

**Project Brief**

Training Center at KhyberPakhtoon khuwa comprises of 500 Acres plot area both for Training Fields and Accommodation for approx. 500 families.

**Utility Power**

- Designed Electrical Load                      7 MW
- Anticipated Max. Demand                      5 MW
- Generation Capacity                              4.5 MW
- Prime Power through MV Feeders from WAPDA and stand-by power through diesel operated generators.

**Scope of ElekEn's Services**

Infra structure for Electrical and Allied Engineering Services

**Power Supply Systems**

- MV Power Distribution System
- Sub-Station Equipments
- Stand-By Power Generation.
- Street Lighting & Control
- Control Automation
- Security Lighting.

**Low Current System**

- Voice Communication
- CATV System

**Salient Features**

- **Centralized, Lighting Control** using programmable relays.
- Step Dimming System for energy conservation.
- Control Automation for power monitoring and control.
- Ring Main System for redundant power network



**APMF SPORTS COMPLEX**

Project	All Pakistan Memon Foundation Sports Complex
Location	Karachi, Pakistan
Owners	All Pakistan Memon Foundation
Architect	The Peak
Status	80% Completed
Built-up Area	88, 771 Sft.

**Project Brief**

Sports Complex included gym, tennis, badminton, swimming pool etc.

**Scope of ElekEn's Services**

Electrical and Allied Engineering Services

**Power Supply Systems**

- KESC Power Distribution
- Street Poles Lighting
- Stand-By Power Generation.
- Tennis & Basket Ball Court Lighting
- Lighting Control Automation
- Security Lighting.

**Low Current System**

- Fire Alarm System
- CATV System
- Intelligent Lighting Control
- Public Address System
- CCTV System

**CASAMENTO MARRIAGE VENUE**

Project	Casamento Marriage Venue
Location	Karachi, Pakistan
Owners	Mr. Abbas Sajid
Architect	S + N Design
Status	Completed
Built-up Area	12,500 Sft

**WORLD MEMON FOUNDATION**

Project	Ladies Gymnasium & Fitness Centre for World Memon Foundation.
Location	Karachi, Pakistan
Owners	World Memon Welfare Trust
Architect	Shahab Ghani Associates
Status	Under Construction
Built-up Area	13,650 Sft
ElekEn's Services	MEP Consulting Services

PROJECTS	M I S C	ELEK EN ASSOCIATES
<b>Related Projects.....</b>		
1. <b>Caltex</b> Filling Station, Jinnah Terminal Karachi.		22. <b>Jamia Masjid Tayyaba</b> Karachi.
2. <b>Caltex</b> Service Station New Karachi.		23. <b>Sabeel Wali Masjid</b> M.A. Jinnah Road, Karachi.
3. <b>Caltex</b> Faisal Service Station Karachi.		24. <b>Dargah Sehwan Sharif</b> Sewan Sharif
4. <b>Caltex</b> Gulshan Service Station. Karachi		25. <b>Dargah Asgher Ali Shah</b> Sehwan Sharif
5. <b>Caltex</b> Mujeeb Service Station Karachi.		26. <b>Sawami Narayn Mandir</b> M.A. Jinnah Road, Karachi.
6. <b>PSO</b> Stadium Road Karachi.		27. <b>Dargah Sehwan Sharif</b> Dhamal Court
7. <b>Caltex</b> Service Station New Town Karachi.		28. <b>Ghoethe Institute</b> Karachi
8. <b>Gohar-e-Nayab Family Resorts.</b>		29. <b>Darul Uloom Korangi</b> Karachi.
9. <b>Noor Auto Mobile.</b> Defence Karachi.		30. <b>Wazir Mansion Karachi.</b>
10. <b>PSO LPG Station</b> Dhodak.		31. <b>Bon Vista Clifton</b> Karachi.
11. <b>Shell Bulk Oil Depot</b> Installation at Machine		32. <b>Awanti Terrace.</b> Karachi.
12. <b>Caltex Bulk Storage</b> Shikarpur.		33. <b>Balochistan High Court.</b> Balochistan.
13. <b>Caltex</b> Raja Service Station.		34. <b>The Gap – Departmental Store.</b> Karachi.
14. <b>UTP</b> Khaskehli		35. <b>Dreamz Village</b> Karachi.
15. <b>PSO</b> Hayder Service Station Lahore.		36. <b>EOBI Office , Awami Markaz</b> Karachi.
16. <b>PSO</b> Saddar Service Station		37. <b>Benson &amp; Hedges Smoker's Room</b> Jinnah International Airport Karachi.
17. <b>PSO</b> Elahi Service Station		38. <b>Cisco Office</b> Clifton Karachi.
18. <b>PSO</b> Qurban Service Station		39. <b>Apna Farm House</b> Dhabejee Sindh
19. <b>Shell Pakistan</b> Kemari		40. <b>Gohar-e-Nayab Farm Houses.</b>
20. <b>Farhan Mosque</b> FTC		41. <b>Banigala Islamabad.</b>
21. <b>Masjid-e-Bilal.</b> Clifton, Karachi.		

42. **Cadbury's Office**  
Karachi.
43. **ISI Head Office Building**  
Karachi.
44. **Mariot Hotel Karachi.**  
Refurbishment of Power Distribution System,  
6th & 7th Floor.
45. **Mothercare Showroom**  
Clifton Karachi.
47. **Pure Element**  
Karachi.
49. **Identity Showroom.**  
Karachi.
50. **Margala Motors Showroom.**  
Karachi.
51. **Multan Cricket Stadium.**  
Arch: Fareed Associates
52. **Pindi Cricket Stadium**  
Arch: Fareed Associates
53. **NSK Academy**  
Arch: Fareed Associates
54. **DHA Sports Complex**  
Arch: Fareed Associates
55. **Garhi Khuda Baksh Stadium**  
Arch: Fareed Associates

INTERNATIONAL



**RAK DENTAL COLLEGE**

Project	RAK Dental College
Location	Ras ul Khaima, UAE
Architect	Consult-Tech International
Status	90% Construction Completed
Built-up Area	130,000 Sft

**Project Brief:**

1B + G + 7 Floors Complex for Hospital. The project has complete hospital facilities including comprehensive pathological labs, OT(s), Pharmacy, Trauma Center & Patients wards. Keeping in view the architectural concept of building, the MEP services are provided and distributed accordingly for the ease of operation and maintenance. 100% back-up power through DG sets.

**Scope of ElekEn's Services****Low Voltage Systems**

- Prime and Stand-by Power
- Lightning Protection
- Power Distribution
- Lighting Systems and Control
- Emergency Lighting

**Low Current System**

- Voice, Data and Video Communication
- Nurse Call System
- Fire Alarm & Access Control System
- IBMS (Integrated Building Management System)

**Salient Features**

- Centralized Lighting Control using Programmable DIN rail mounted relays & Low Current Systems Integration for CCTV, Access Control, load monitoring and Fire Alarm System etc.

**AL-GHURAIR GIGA GOLD REFINERY**

Project	Al Ghurair Giga Gold Refinery
Location	Emirates Hill – UAE
Status	Completed
Built-up Area	200,000 Sft
ElekEn's Services	Design Vetting and Construction Documents



**BURJ MARINA**



Project	Burj Marina
Location	Doha, Qatar
Architect	Erga Group
Status	Preparation of Construction drawings for site execution.
Built-up Area	1,432,850 Sft

**Scope of ElekEn's Services:**

**Low Voltage Systems**

- Internal & External Illumination
- Utility Power Receptacles.
- Power Distribution System
- Cable Containments
- Sub Station Equipments
- Lighting Protection System
- Earthing / Grounding
- Standby Power Generators
- Energy Metering.

**Low Current System**

- Voice & Data Communication System
- Intercommunication System
- Emergency evacuation system
- CCTV System
- Fire Alarm System
- PA / BGM System
- Access Control System

**ARY GOLD REFINERY**



Project	ARY Gold Refinery
Location	UAE
Architect	Emaar GIGA
Status	Completed
Built-up Area	500,000 Sft
ElekEn's Services	Stand-by Power Supply Power Distribution Lighting Voice and Data CCTV Fire Alarm System

**ANC BUILDING**

Project	ANC Building
Location	Libya
Architect	Fareed Associates
Status	Design Development
Built-up Area	98,220 Sft
ElekEn's Services	Stand-by Power Supply Power Distribution Lighting Voice and Data CCTV Fire Alarm System Back-ground Music

**DJIBOUTI SALT FACILITIES – BP2**

Project	Djibouti Salt Facilities – BP2
Location	Djibouti
Architect	Enterprise Dawaleh Construction
Status	Completed
Built-up Area	1,125,000 Sft

**Project Brief:**

Salt Refinery.

The project has completed for salt refinery facilities including heavy machinery for Screening equipments, chemical salt stacking and deicing operation etc. PLC control System, Grounding & Bonding System, Lightning Protection System, Corrosion Resistance Codes and Fix and portable lighting System.

Keeping in view the design concept of facilities, the Electrical services are provided and distributed accordingly for the ease of operation and maintenance.

100% back-up power through fix and portable DG sets.

**Scope of ElekEn's Services**

Electrical and Allied Engineering Services

**Low Voltage Systems**

- Prime and Stand-by Power
- Lightning Protection
- Power Distribution
- Lighting Systems and Control
- Photocell Control Lighting
- Emergency Lighting
- Grounding & Bonding System

**Low Current System**

- PLC Control System
- Uninterruptible Power Supply.
- Fire Alarm System
- IBMS (Integrated Building Management System)

**Salient Features**

- Centralized Lighting Control using Programmable DIN rail mounted relays.
- Low Current Systems Integration for PLC System, Fire Alarm System etc.





**DJIBOUTI SALT FACILITIES – BP4**

Project	Djibouti Salt Facilities – BP4
Location	Djibouti
Architect	Enterprise Dawaleh Construction
Status	Completed
Built-up Area	1,180,000 Sft

**Project Brief**

Salt Refinery.

The project has completed for salt refinery facilities including heavy machinery for Screening equipments, chemical salt stacking and deicing operation etc. PLC control System, Grounding & Bonding System, Lightning Protection System, Corrosion Resistance Codes and Fix and portable lighting System.

Keeping in view the design concept of facilities, the Electrical services are provided and distributed accordingly for the ease of operation and maintenance.

100% back-up power through fix and portable DG sets.

**Scope of ElekEn's Services**

Electrical and Allied Engineering Services

**Low Voltage Systems**

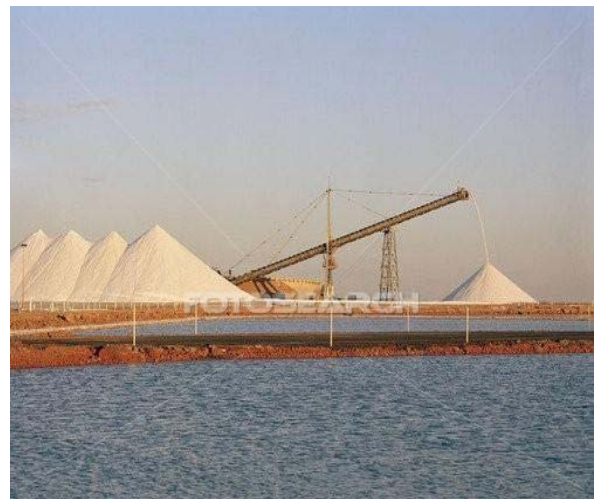
- Prime and Stand-by Power
- Lightning Protection
- Power Distribution
- Lighting Systems and Control
- Photocell Control Lighting
- Emergency Lighting
- Grounding & Bonding System

**Low Current System**

- PLC Control System
- Uninterruptible Power Supply.
- Fire Alarm System
- IBMS (Integrated Building Management System)

**Salient Features**

- Centralized Lighting Control using Programmable DIN rail mounted relays.



**TEMA INLAND CONTAINER DEPOT**

Project	Container Depot Tema Inland
Location	Ghana
Architect	Fareed Associates
Status	Completed
Built-up Area	6,870 Sft
ElekEn's Services	Stand-by Power Supply Power Distribution Lighting Voice and Data CCTV Fire Alarm System

**SHAIKH ZAYED PALACE**

Project	Shaikh Zayed Palace
Location	Jordan
Architect	Pee Dee Associates
Status	Completed
Built-up Area	23,415 Sft
ElekEn's Services	Stand-by Power Supply Power Distribution Lighting Voice Communication

**URGAT FERMENTATION PLANT**

Project	Urgat Fermentation Plant
Location	Uzbekistan
Architect	Ghani Ansar Partnership
Status	Completed
Built-up Area	300,000 Sft
ElekEn's Services	Power Distribution Lighting Voice and Data CCTV Fire Alarm System